

ZETLAND, NSW

209/6 Ebsworth Street

1
BED

1
BATH



North facing 1-Bedroom Apartment + Study Area in Ovo

This 66sqm, 1-Bedroom Apartment features:

- Large bedroom with generous built-in wardrobe
- Generous living and dining area, leading to North-facing balcony
- Modern kitchen with stone benchtop and Smeg appliances
- Sleek bathroom with plenty of storage
- Internal laundry with dryer included
- Study nook at entry, perfect for a home office
- Secure storage cage included
- Ducted A/C, video intercom and NBN connectivity
- 300m to Woolworths, The Social Corner and Green Square Train Station (10mins to the City)

DEPOSIT TAKEN - More Apartments Available!

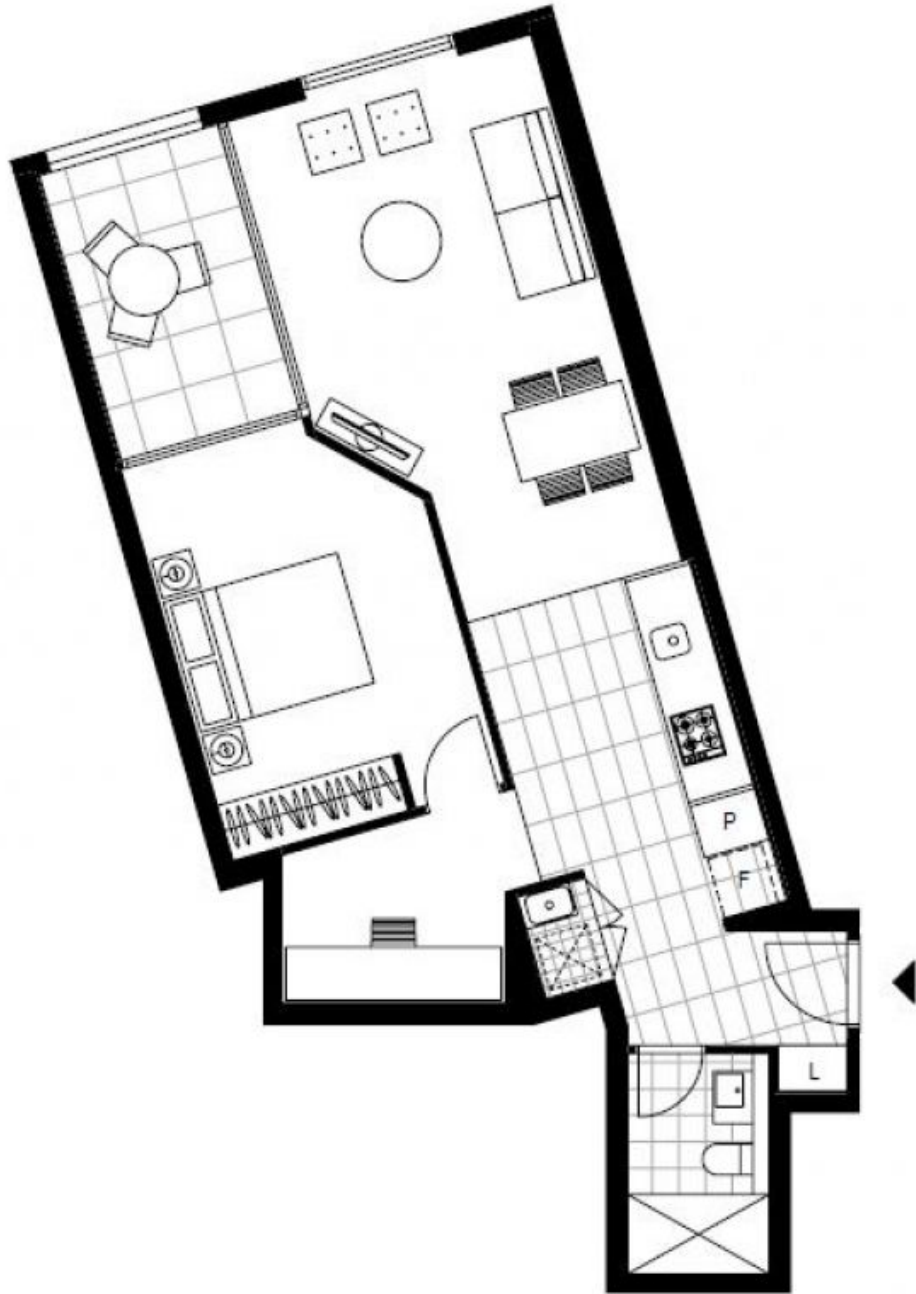
Contact: Carmen Whiteley
02 8588 8888
0497 555 519

Type: Apartment

Date Available: 27/06/2020

Bond: \$2000

<https://www.resbymirvac.com>



LEVEL 2

Plans shown are only indicative of layout. Dimensions are approximate.

ZETLAND, NSW
209/6 Ebsworth Street