



DEPOSIT TAKEN

# More apartments available for lease in Harold Park!

Please call or text our leasing hotline 0401 545 440 today for more information

[www.resbymirvac.com](http://www.resbymirvac.com)

**HAROLD PARK**  
GLEBE'S SECRET BACKYARD



**GLEBE, NSW**  
G03/1 Cullen Close

**1**  
BED

**1**  
BATH



**Deposit Taken | More are available, call our team on: 02 8588 8888**

This 56sqm, Ground-Floor Apartment features:

Premium 1-Bedroom Apartment in Glebe

- Generous sized bedroom with built-in wardrobe
- Open-plan living and dining area, with built-in window seat
- Contemporary kitchen with stone benchtop and Miele appliances
- Sleek bathroom with plenty of vanity storage
- West-facing balcony with leafy outlook
- Internal laundry with washing machine and dryer included
- Secure storage cage included
- Ducted A/C, video intercom and NBN connectivity
- 450m to the Heritage-listed Tramsheds, light rail and public transport

**Deposit Taken | More are available: 02 8588 8888**

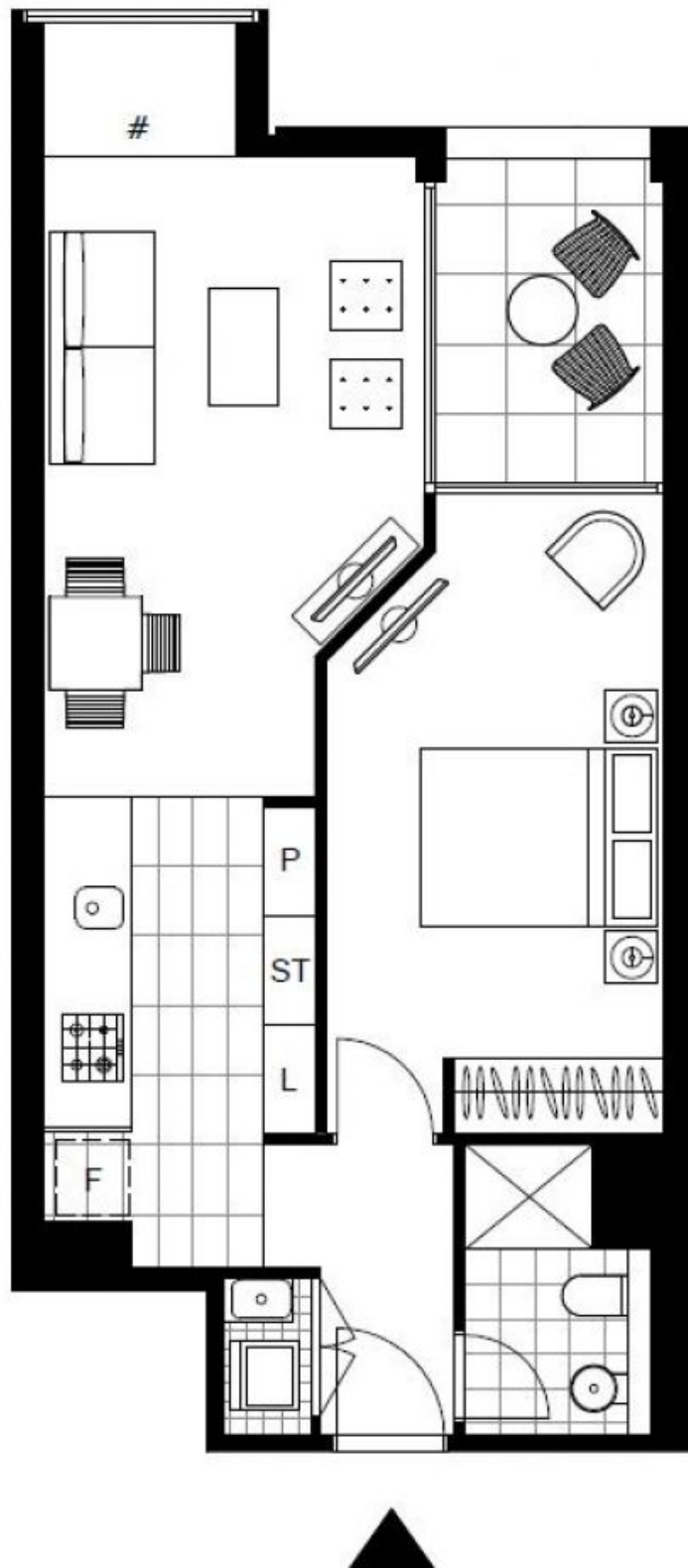
**Contact:** Naz Sabzpouri  
02 8588 8888  
0401 545 440

**Type:** Apartment

**Date Available:** 07/08/2020

**Bond:** \$1980

<https://www.resbymirvac.com>



Plans shown are only indicative of layout. Dimensions are approximate.

**GLEBE, NSW**  
G03/1 Cullen Close