



ZETLAND, NSW

609/6 Ebsworth Street

2
BED

2
BATH



Contemporary 2-Bedroom Apartment with City Views

This North-East Facing Apartment features;

- Modern kitchen with stone benchtop island and built-in appliances
- Large bedrooms with floor to ceiling built-in wardrobes
- Open plan living and dining area
- North facing balcony with stunning city views
- Internal laundry with dryer included
- Sleek bathrooms with plenty of storage, ensuite off master bedroom
- Secure storage cage included
- Ducted A/C, video intercom and NBN connectivity
- 300m to Woolworths, The Social Corner and Green Square Train Station (10mins to the City)

More apartments coming soon!

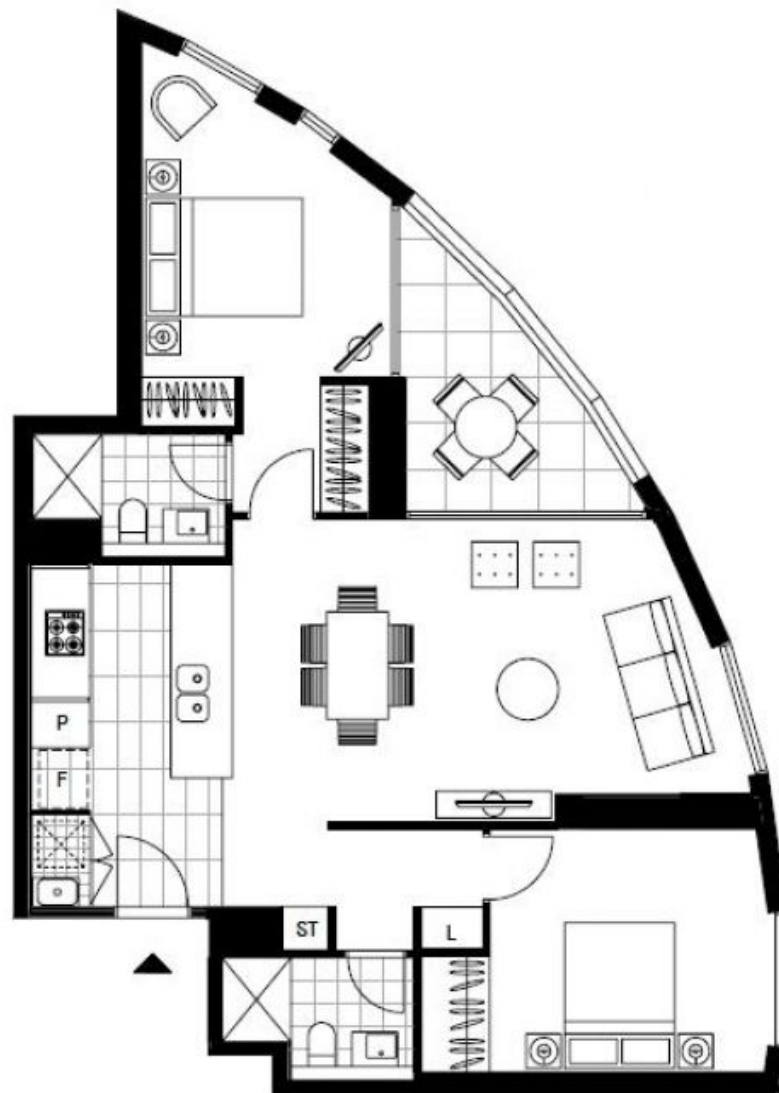
Contact: Carmen Whiteley
02 8588 8888
0497 555 519

Type: Apartment

Date Available: 14/01/2021

Bond: \$2560

<https://www.resbymirvac.com>



LEVEL 6

Plans shown are only indicative of layout. Dimensions are approximate.

ZETLAND, NSW
609/6 Ebsworth Street