



ZETLAND, NSW

202/6 Ebsworth Street

1
BED

1
BATH



Oversized 1-Bedroom Apartment in Ovo, Zetland

This near new, 60sqm 1-Bedroom Apartment features;

- Large bedroom with floor to ceiling built-in wardrobe
- Open-plan living and dining area flowing onto balcony
- Modern kitchen with stone benchtop and built-in appliances
- South-West facing balcony with access from living area
- Sleek bathroom with plenty of storage
- Internal laundry with dryer included
- Ducted A/C, video intercom and NBN connectivity
- Close to Woolworths, The Social Corner and Green Square Train Station

DEPOSIT TAKEN

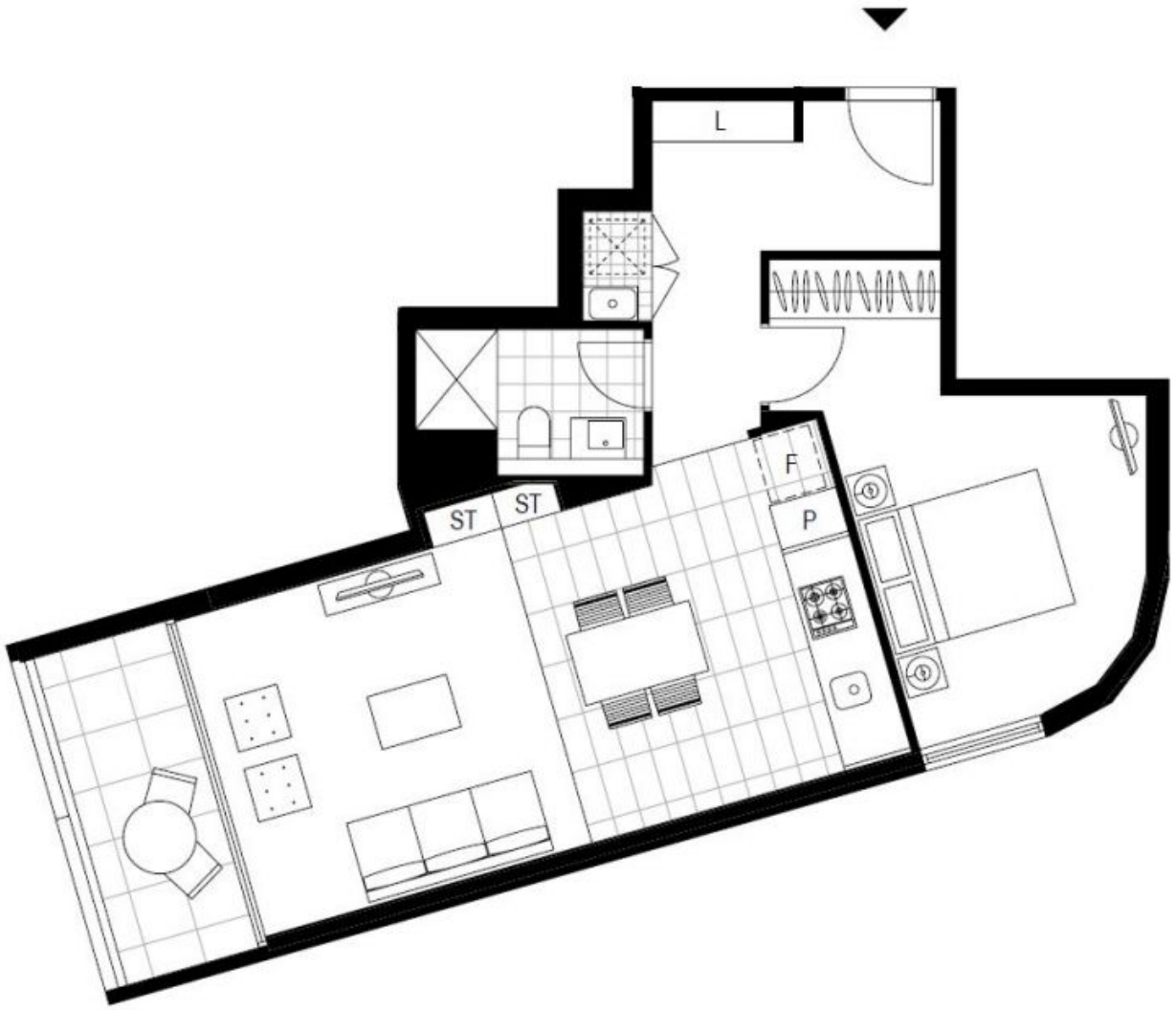
Contact: Carmen Whiteley
02 8588 8888
0497 555 519

Type: Apartment
Date Available: 24/03/2020

Bond: \$2380

<https://www.resbymirvac.com>

For more information please contact Real Estate Services by Mirvac on 02 8588 8888 or email enquiries@resbymirvac.com - Your Onsite Agent!



Plans shown are only indicative of layout. Dimensions are approximate.

ZETLAND, NSW
202/6 Ebsworth Street