



ZETLAND, NSW

807/6 Ebsworth Street

2 BED **1** BATH **1** CAR 

2-Bedroom Apartment with City Views and Parking

This 82sqm, 2-Bedroom Apartment features:

- Large bedrooms with floor to ceiling built-in wardrobes
- Open-plan living and dining area flowing onto balcony
- Modern kitchen with stone benchtop and Smeg appliances
- Sleek bathroom with plenty of storage
- North-East facing balcony, access from living and both bedrooms
- Internal laundry with dryer included
- Secure basement car space and storage cage included
- Ducted A/C, video intercom and NBN connectivity
- 300m to Woolworths, The Social Corner and Green Square Train Station

DEPOSIT TAKEN - More apartments available!

Contact: Carmen Whiteley
02 8588 8888
0497 555 519

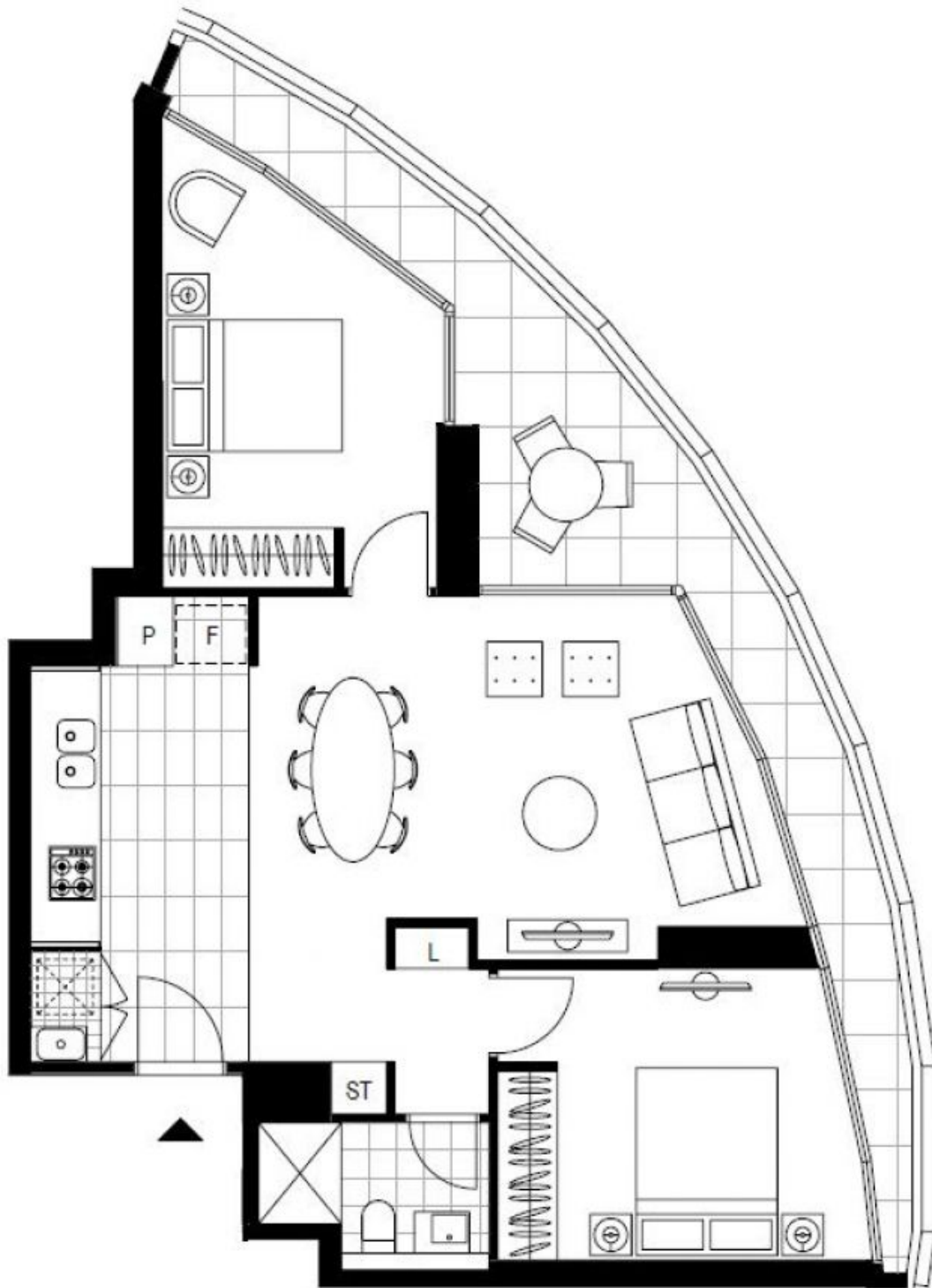
Type: Apartment

Date Available: 17/12/2020

Bond: \$2560

<https://www.resbymirvac.com>

For more information please contact Real Estate Services by Mirvac on 02 8588 8888 or email enquiries@resbymirvac.com - Your Onsite Agent!



LEVEL 8

Plans shown are only indicative of layout. Dimensions are approximate.

ZETLAND, NSW
807/6 Ebsworth Street