



## ZETLAND, NSW

807/6 Ebsworth Street

**2** BED **1** BATH **1** CAR 

### 2-Bedroom Apartment with City Views and Parking

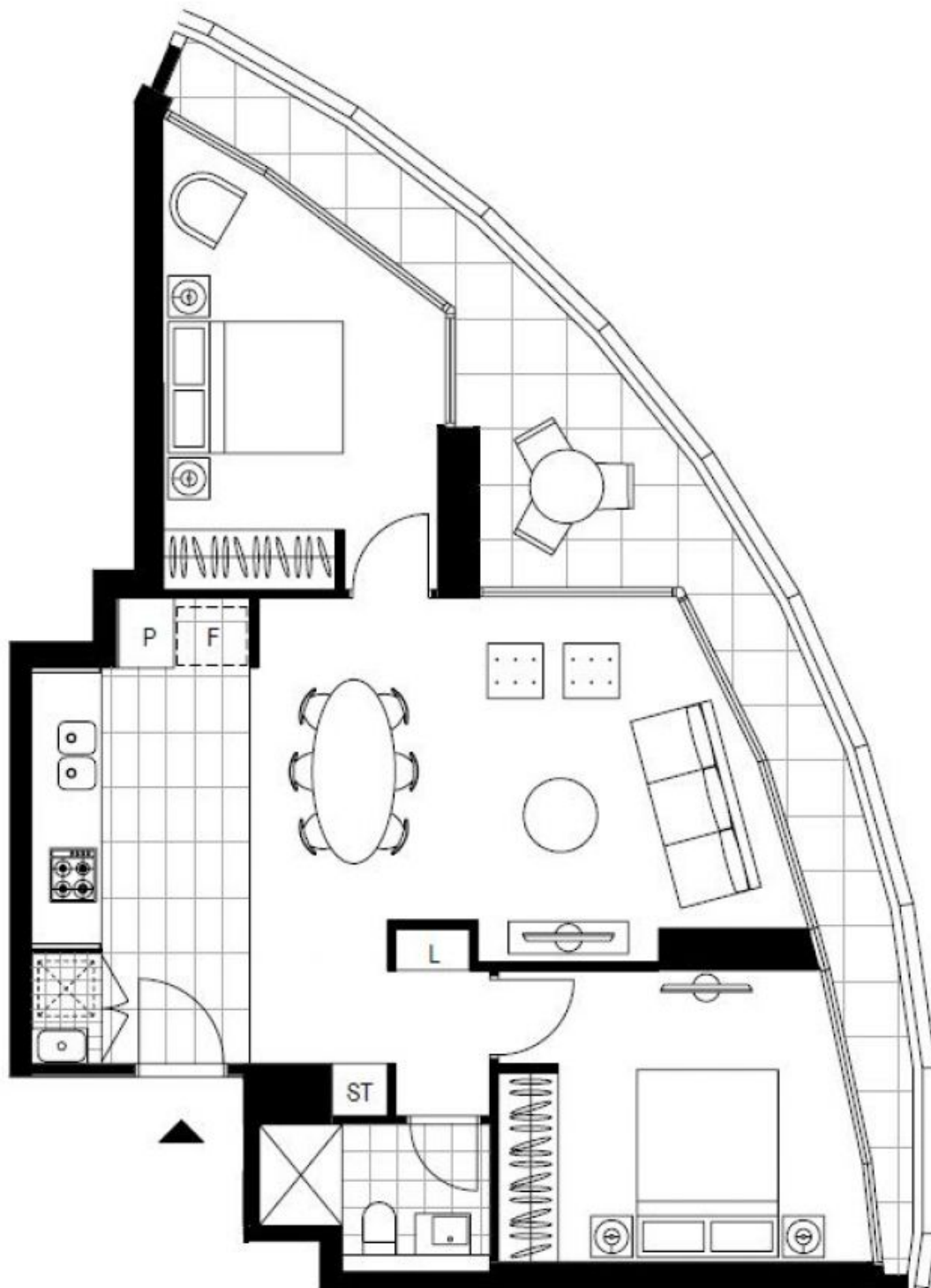
This 82sqm, 2-Bedroom Apartment features:

- Large bedrooms with floor to ceiling built-in wardrobes
- Open-plan living and dining area flowing onto balcony
- Modern kitchen with stone benchtop and Smeg appliances
- Sleek bathroom with plenty of storage
- North-East facing balcony, access from living and both bedrooms
- Internal laundry with dryer included
- Secure basement car space and storage cage included
- Ducted A/C, video intercom and NBN connectivity
- 300m to Woolworths, The Social Corner and Green Square Train Station

### DEPOSIT TAKEN - More apartments available!

**Contact:** Carmen Whiteley  
02 8588 8888  
0497 555 519  
**Type:** Apartment  
**Date Available:** 17/12/2020  
**Bond:** \$2560  
<https://www.resbymirvac.com>

For more information please contact Real Estate Services by Mirvac on 02 8588 8888 or email [enquiries@resbymirvac.com](mailto:enquiries@resbymirvac.com) - Your Onsite Agent!



LEVEL 8

Plans shown are only indicative of layout. Dimensions are approximate.

**ZETLAND, NSW**  
807/6 Ebsworth Street