



ZETLAND, NSW
401/28 Ebsworth Street

2 BED **2** BATH **1** CAR 

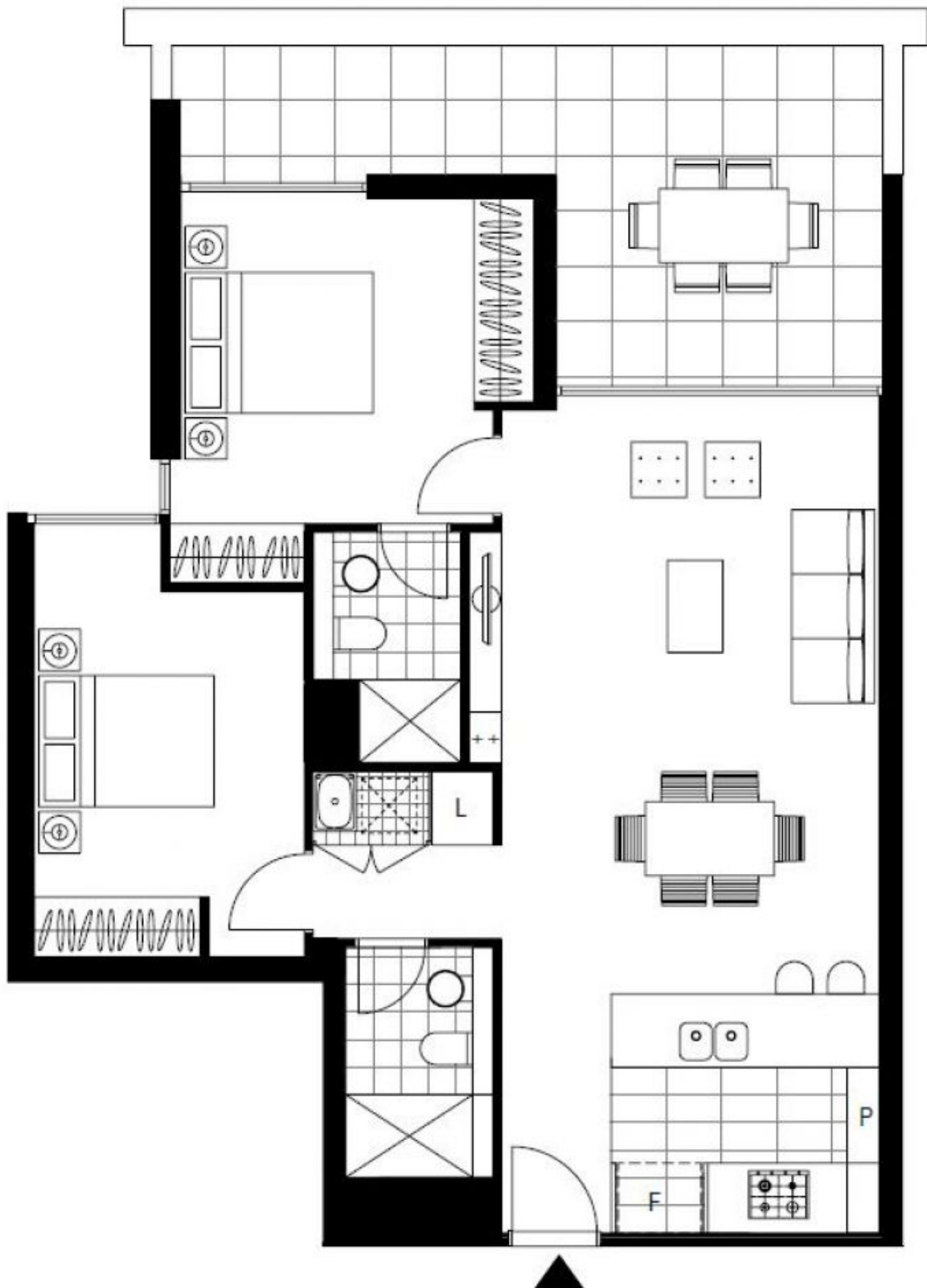
City Views from 2-Bedroom Apartment in Zetland

This 97sqm, 4th floor Apartment features:

- Well-appointed bedrooms with built-in wardrobes
- Generous living and dining area, with built-in TV cabinetry
- Contemporary kitchen with stone benchtops and Smeg appliances
- Sleek bathrooms with plenty of vanity storage
- Spacious North-East facing balcony, with city views
- Internal laundry with dryer included
- Secure car space and storage cage included
- Ducted A/C, video intercom and NBN connectivity
- 300m to Woolworths, The Social Corner and Green Square Train Station (10mins to the City)

DEPOSIT TAKEN

Contact: Carmen Whiteley
02 8588 8888
0497 555 519
Type: Apartment
Date Available: 22/02/2020
Bond: \$3320
<https://www.resbymirvac.com>



Plans shown are only indicative of layout. Dimensions are approximate.

ZETLAND, NSW
401/28 Ebsworth Street