

## ZETLAND, NSW

401/28 Ebsworth Street

**2** BED **2** BATH **1** CAR 

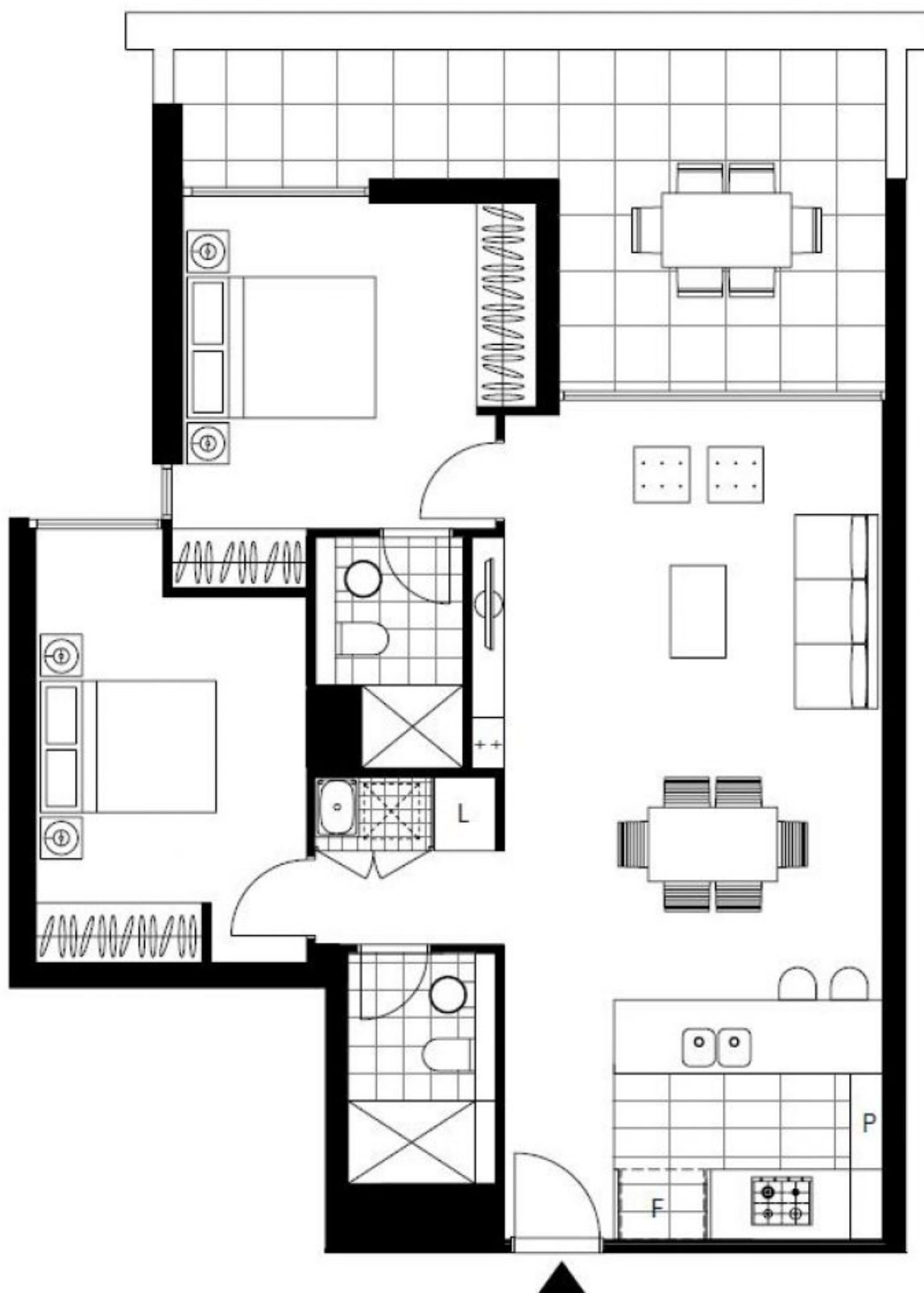
### City Views from 2-Bedroom Apartment in Zetland

This 97sqm, 4th floor Apartment features:

- Well-appointed bedrooms with built-in wardrobes
- Generous living and dining area, with built-in TV cabinetry
- Contemporary kitchen with stone benchtops and Smeg appliances
- Sleek bathrooms with plenty of vanity storage
- Spacious North-East facing balcony, with city views
- Internal laundry with dryer included
- Secure car space and storage cage included
- Ducted A/C, video intercom and NBN connectivity
- 300m to Woolworths, The Social Corner and Green Square Train Station (10mins to the City)

### DEPOSIT TAKEN

**Contact:** Carmen Whiteley  
02 8588 8888  
0497 555 519  
**Type:** Apartment  
**Date Available:** 22/02/2020  
**Bond:** \$3320  
<https://www.resbymirvac.com>



Plans shown are only indicative of layout. Dimensions are approximate.

**ZETLAND, NSW**  
401/28 Ebsworth Street