



## BONDI, NSW

6401/32 Wellington Street

**1** BED **1** BATH **1** CAR 

### 1-Bedroom Apartment with parking in The Moreton

This bright, 50sqm 1-Bedroom Apartment features;

- Large bedroom with floor to ceiling built-in wardrobe
- Stone benchtop in kitchen with Miele appliances
- Sleek stone bathroom with modern features
- Private balcony with access from master and living
- Internal laundry with washer and dryer included
- Secure basement car space and storage cage provided
- Ducted A/C, video intercom and NBN connectivity
- Close to schools, transport and Bondi Beach (1.5km)

**750**

**Contact:**

Georgia Glynn  
02 8588 8888  
0481 388 777  
Carmen Whiteley  
02 8588 8888  
0497 555 519

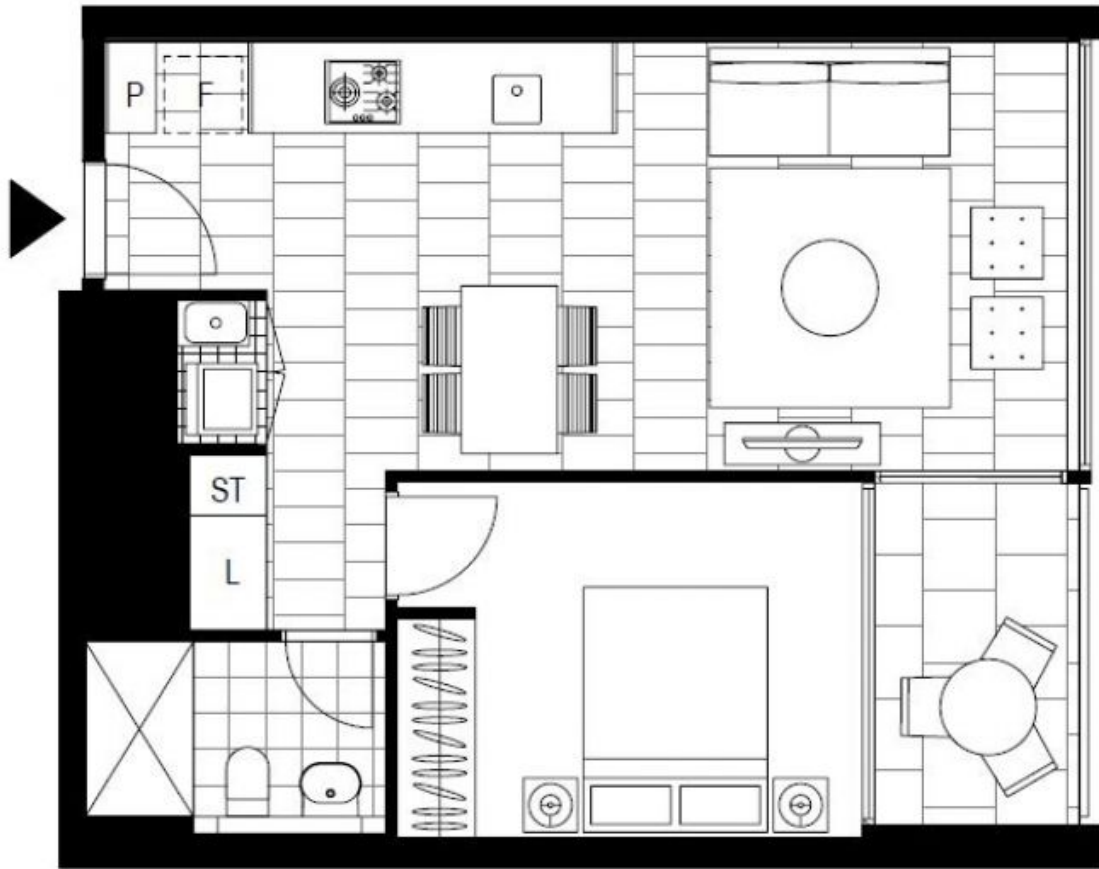
**Type:** Apartment

**Date Available:** 06/06/2018

**Bond:** \$3000

<https://www.resbymirvac.com>

For more information, please contact Real Estate Services by Mirvac on 02 8588 8888 or email [enquiries@resbymirvac.com](mailto:enquiries@resbymirvac.com)



Plans shown are only indicative of layout. Dimensions are approximate.

**BONDI, NSW**  
6401/32 Wellington Street