



ZETLAND, NSW

207/6 Ebsworth Street

1
BED

1
BATH



Bright 1-Bedroom Apartment in 'Ovo', Zetland

This Level 2, 57sqm 1-Bedroom Apartment features:

- Large bedroom with floor to ceiling built-in wardrobe
- Open plan living and dining area flowing onto North-facing balcony
- Modern kitchen with stone benchtop and Smeg appliances
- Sleek bathroom with plenty of storage
- Internal laundry with dryer include
- Secure storage cage included
- Ducted A/C, video intercom and NBN connectivity
- Close to Woolworths, The Social Corner and Green Square Train Station

DEPOSIT TAKEN - More apartments coming soon!

Contact: Carmen Whiteley
02 8588 8888
0497 555 519

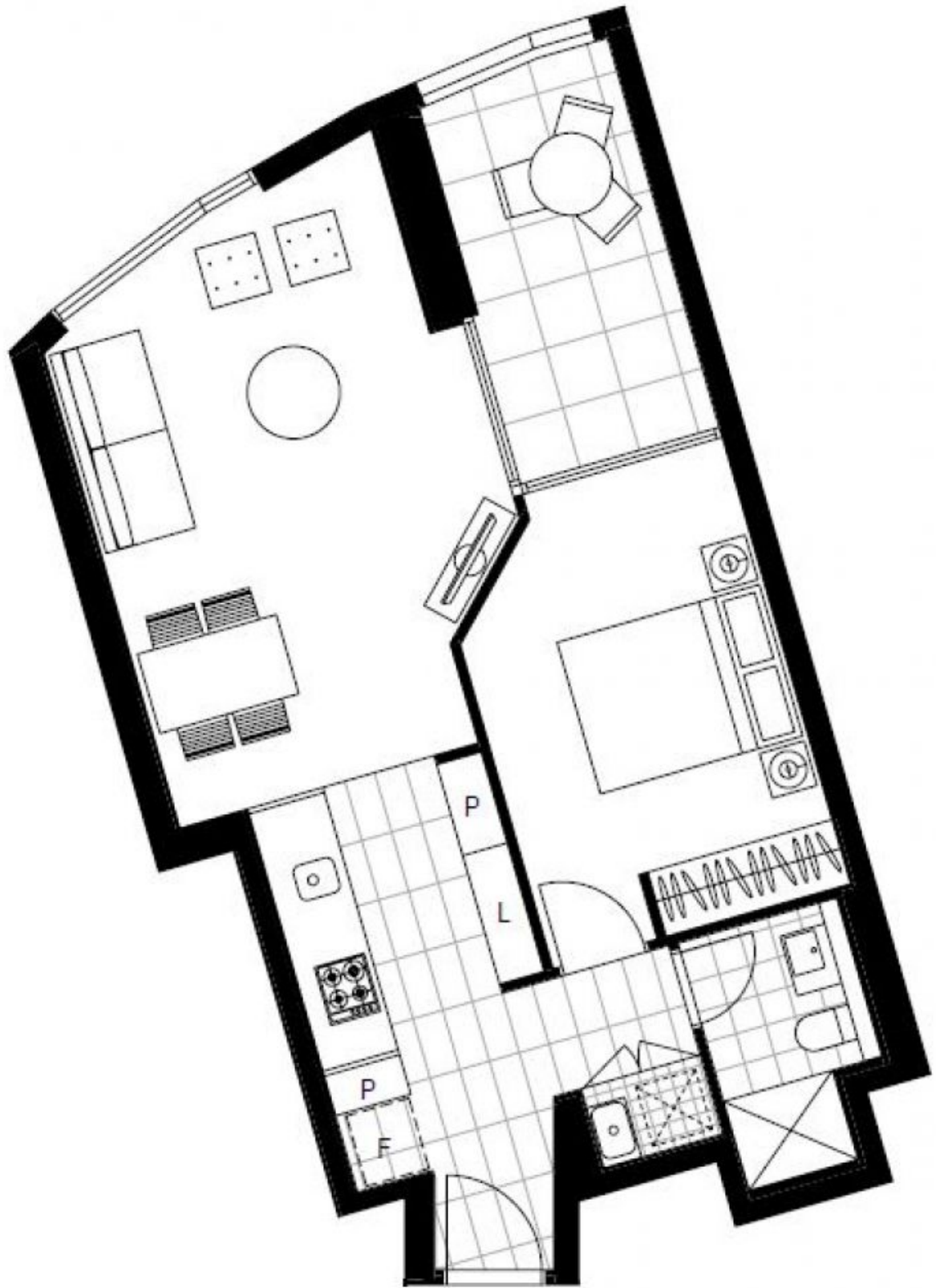
Type: Apartment

Date Available: 01/10/2020

Bond: \$2080

<https://www.resbymirvac.com>

For more information please contact Real Estate Services by Mirvac on 02 8588 8888 or email enquiries@resbymirvac.com - Your Onsite Agent!



Plans shown are only indicative of layout. Dimensions are approximate.

ZETLAND, NSW
207/6 Ebsworth Street