

DEPOSIT TAKEN

# More apartments available for lease in Green Square - Zetland!

Please call our leasing hotline 0497 555 519 for more information



GREEN SQUARE



**ZETLAND, NSW**  
906/6 Ebsworth Street

**2** BED **2** BATH **1** CAR 

## 2-Bedroom Apartment with City Views and Parking in Zetland

This 103sqm, 9th floor Apartment features:

- Large bedrooms with generous built-in wardrobes
- Open-plan living and dining area, perfect for entertaining
- Modern kitchen with stone benchtops and Smeg appliances
- Sleek bathrooms with plenty of vanity storage, bath in ensuite
- Sunny, North-facing balcony with uninterrupted city views
- Internal laundry with dryer included
- Study nook with built-in desk, perfect for a home office
- Secure car space and storage cage included
- Ducted A/C, video intercom and NBN connectivity
- 300m to Woolworths, The Social Corner and Green Square Train Station (10mins to the City)

## DEPOSIT TAKEN - FIRST INSPECTION!

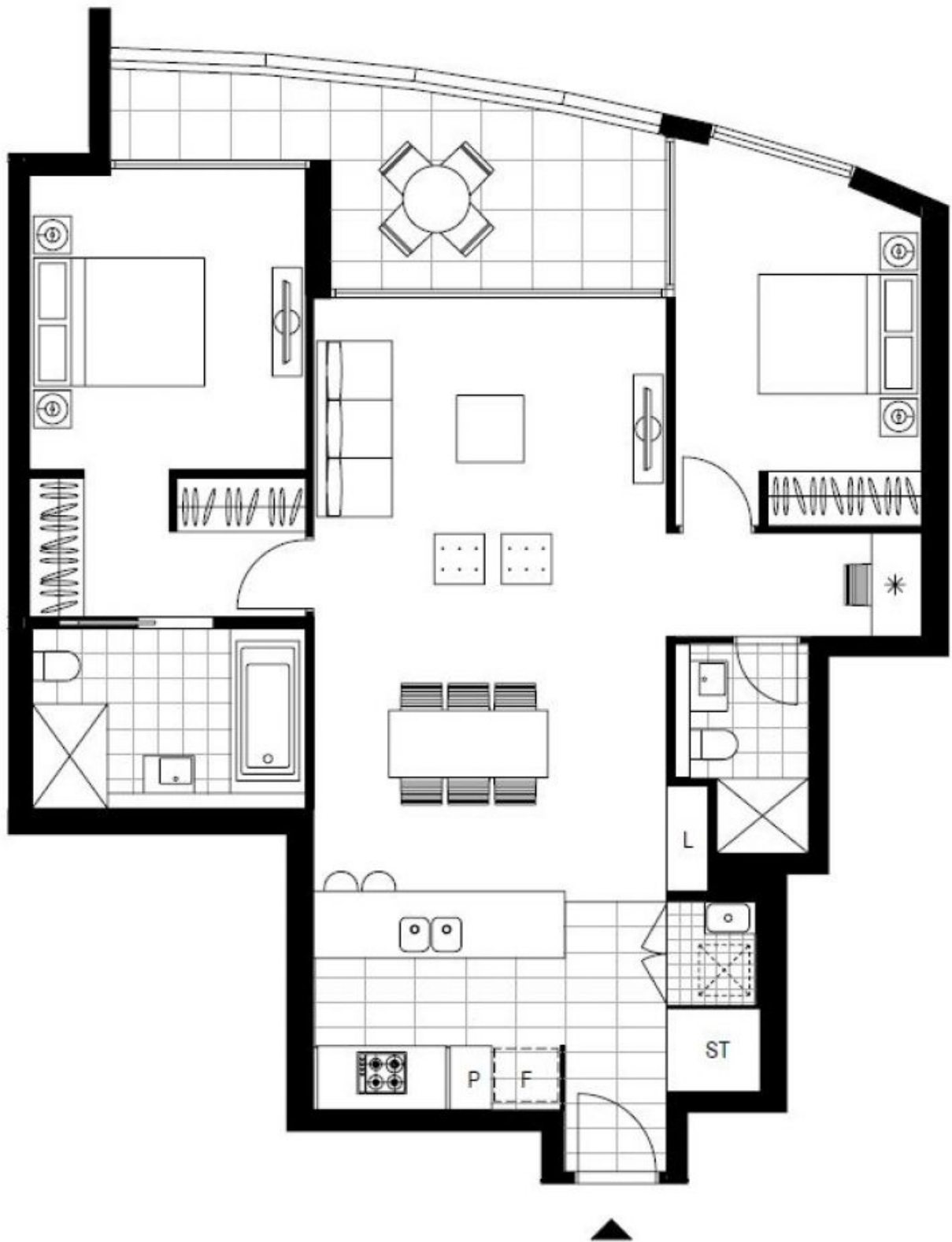
**Contact:** Carmen Whiteley  
02 8588 8888  
0497 555 519

**Type:** Apartment

**Date Available:** 16/09/2020

**Bond:** \$2800

<https://www.resbymirvac.com>



Plans shown are only indicative of layout. Dimensions are approximate.

**ZETLAND, NSW**  
906/6 Ebsworth Street