

DEPOSIT TAKEN

More apartments available for lease in Green Square - Zetland!

Please call our leasing hotline 0497 555 519 for more information



GREEN SQUARE



ZETLAND, NSW
906/6 Ebsworth Street

2 2 1
BED BATH CAR



2-Bedroom Apartment with City Views and Parking in Zetland

This 103sqm, 9th floor Apartment features:

- Large bedrooms with generous built-in wardrobes
- Open-plan living and dining area, perfect for entertaining
- Modern kitchen with stone benchtops and Smeg appliances
- Sleek bathrooms with plenty of vanity storage, bath in ensuite
- Sunny, North-facing balcony with uninterrupted city views
- Internal laundry with dryer included
- Study nook with built-in desk, perfect for a home office
- Secure car space and storage cage included
- Ducted A/C, video intercom and NBN connectivity
- 300m to Woolworths, The Social Corner and Green Square Train Station (10mins to the City)

DEPOSIT TAKEN - FIRST INSPECTION!

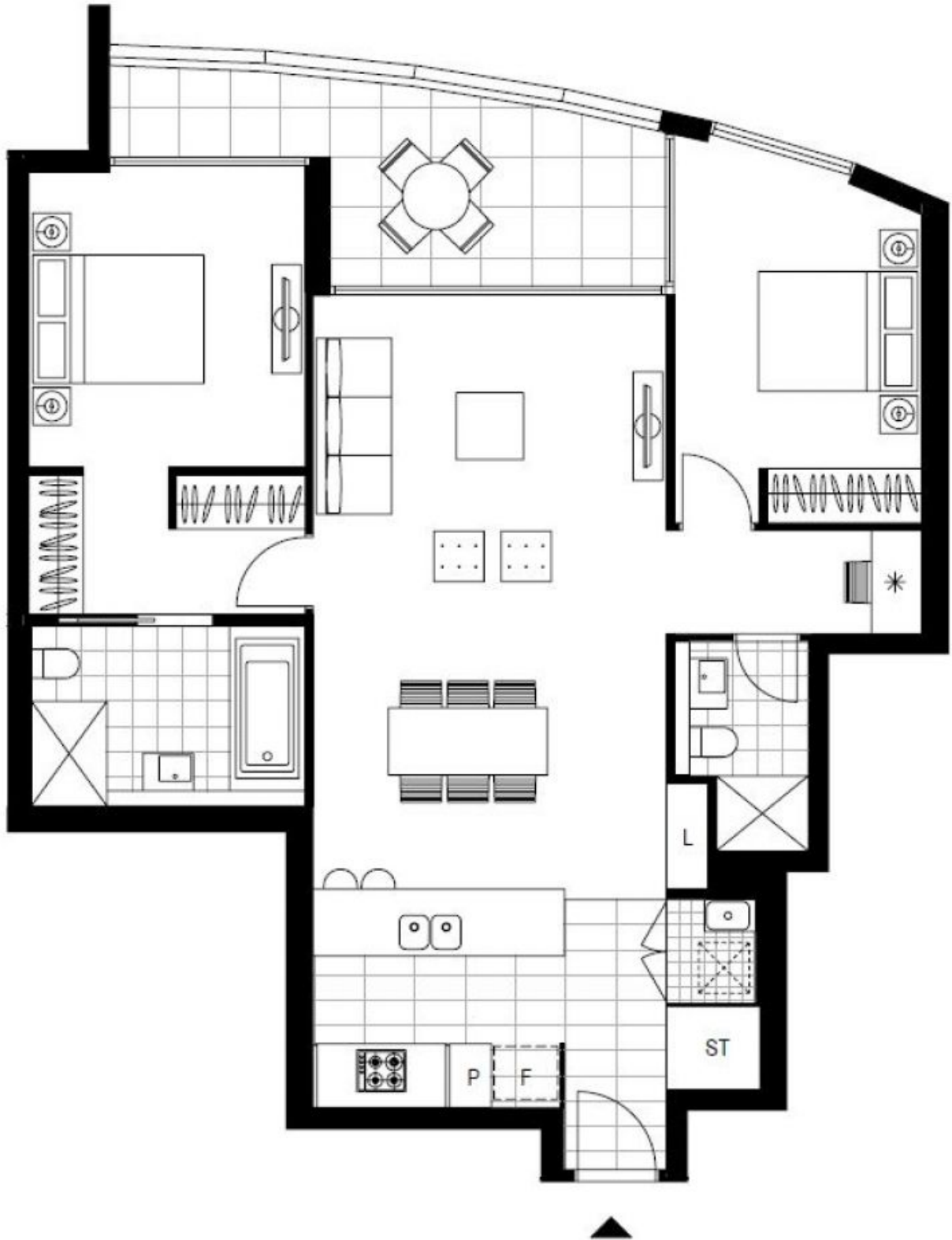
Contact: Carmen Whiteley
02 8588 8888
0497 555 519

Type: Apartment

Date Available: 16/09/2020

Bond: \$2800

<https://www.resbymirvac.com>



Plans shown are only indicative of layout. Dimensions are approximate.

ZETLAND, NSW
906/6 Ebsworth Street