

GLEBE, NSW

412/131 Ross Street

1
BED

1
BATH



DEPOSIT TAKEN!

This 71sqm, 4th floor Apartment features:

Oversized 1-Bedroom Apartment in Harold Park

- Spacious bedroom with generous built-in wardrobe
- Open-plan living and dining area, leading to the balcony
- Contemporary kitchen with stone benchtop and Miele appliances
- Ultramodern bathroom with generous storage
- Large balcony, great for entertaining
- Additional balcony off bedroom, overlooking the park
- Internal laundry with washer and dryer included
- Study nook, perfect for a home office
- Ducted A/C, video intercom and NBN connectivity
- 350m to the Heritage-listed Tramsheds, light rail station and public transport

DEPOSIT TAKEN

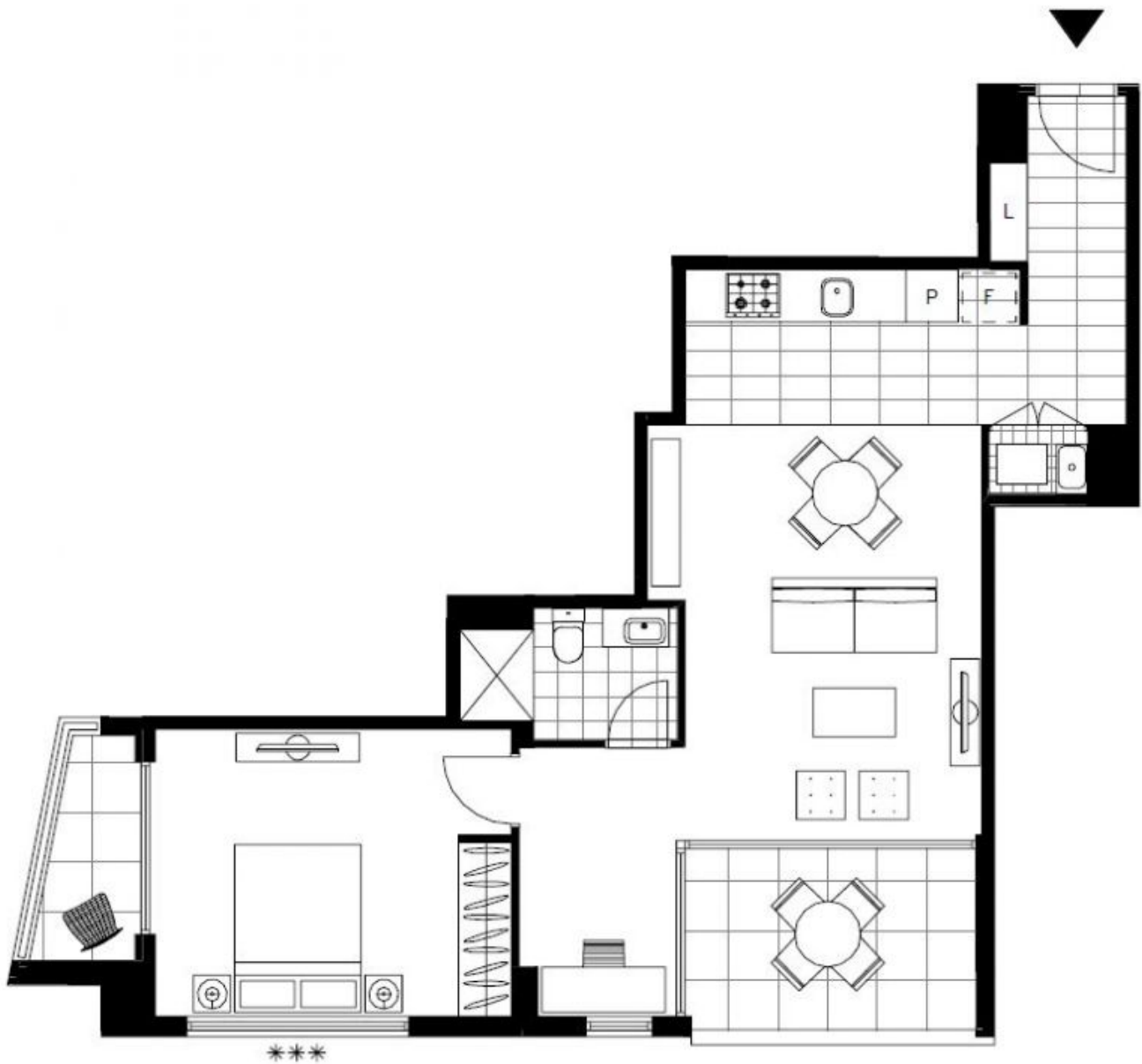
Contact: Matthew Matthews
02 8588 8888
0418 266 590
Naz Sabzpouri
02 8588 8888
0401 545 440

Type: Apartment

Date Available: 21/06/2019

Bond: \$2360

<https://www.resbymirvac.com>



Plans shown are only indicative of layout. Dimensions are approximate.

GLEBE, NSW
412/131 Ross Street