



## ZETLAND, NSW

1603/2-6 Ebsworth Street

**1**  
BED

**1**  
BATH



### Sweeping district and city views from brand new apartment in Zetland!

This Level 16, 61sqm 1-Bedroom Apartment features;

- Large bedroom with floor to ceiling built-in wardrobe
- Open plan living and dining area flowing onto balcony
- Modern kitchen with stone benchtops and built-in appliances
- West facing balcony with sweeping views of the city skyline
- Internal laundry with dryer included
- Sleek bathroom with plenty of storage
- Secure basement storage cage included
- Ducted A/C, video intercom and NBN connectivity
- Close to Woolworths, 'The Social Corner' and Green Square Train Station.

**630**

**Contact:**

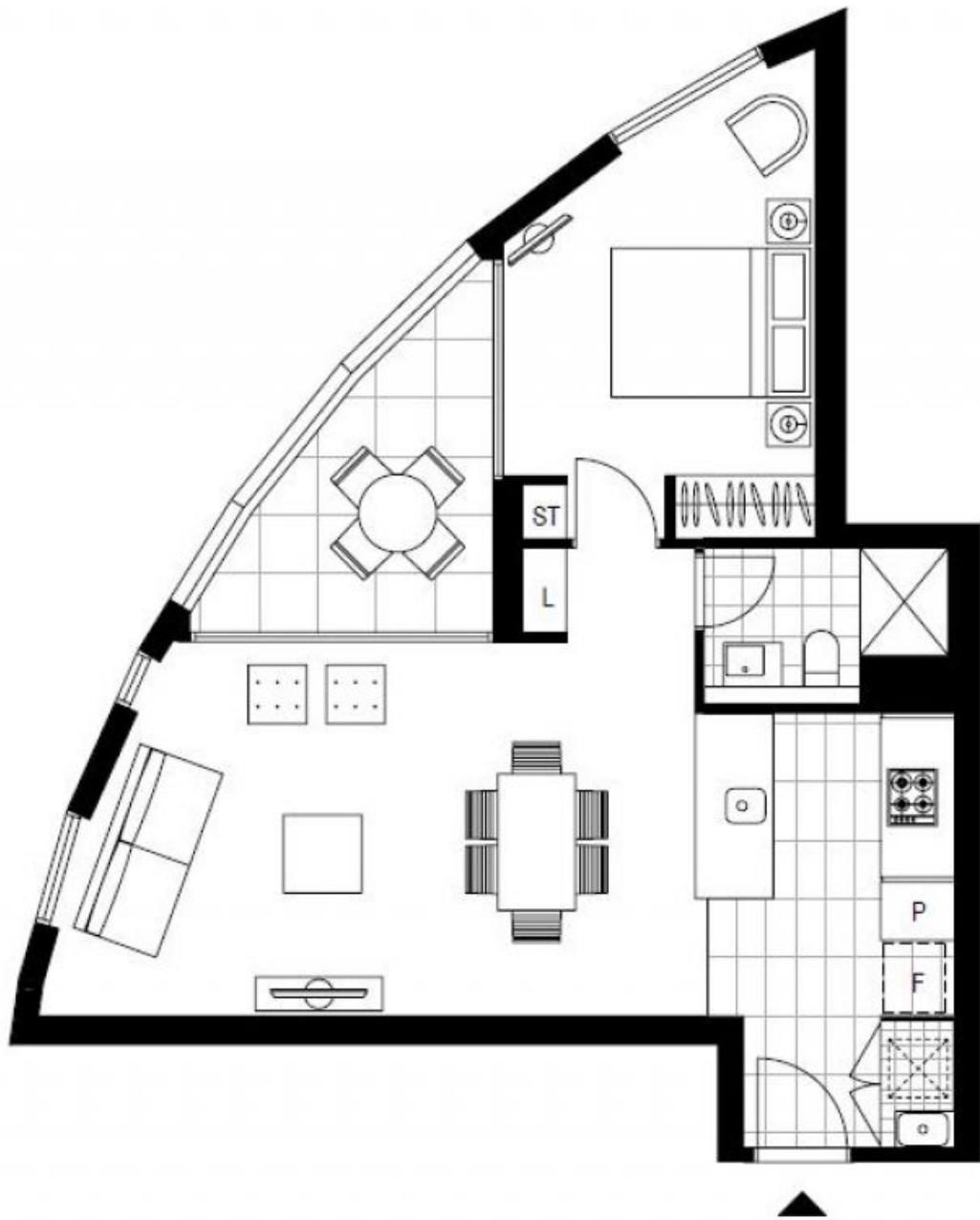
Georgia Glynn  
02 8588 8888  
0481 388 777  
Carmen Whiteley  
02 8588 8888  
0497 555 519

**Type:** Apartment

**Date Available:** 04/06/2018

**Bond:** \$2520

<https://www.resbymirvac.com>



Plans shown are only indicative of layout. Dimensions are approximate.

**ZETLAND, NSW**  
1603/2-6 Ebsworth Street