



DONCASTER, VIC
53 Stables Circuit

3 BED **2** BATH **1** CAR



3 Bedroom Brand New Townhouse

Set in an a convenient location, you will revel in being so close to Doncaster Shopping Town, the Eastern Freeway, accessible public transport and Doncaster's 'Park and Ride'.

This home feels of luxury with wooden and white tones throughout, and lots of natural light.

The home is completed with premium fixtures and fittings, this BRAND NEW dual level home will suit everyone's needs.

The ground lower level consists of an open plan living/dining area adjoining the deluxe, well-appointed kitchen with Central Island bench with ample of storage. The open plan living area opens out to a private landscaped back yard creating a private space for families to relax and enjoy. Also for additional storage in the hall is a storage area under stairs.

\$610 per week

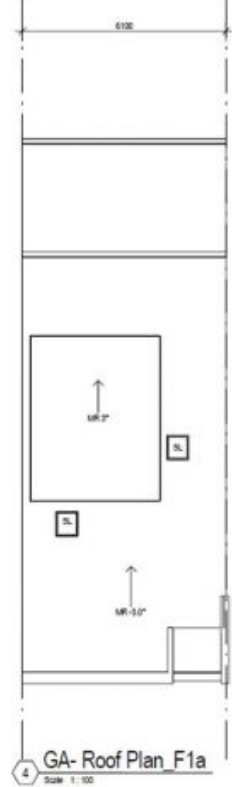
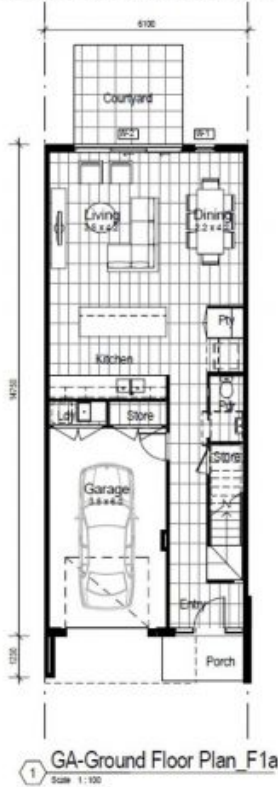
Contact: Baden Lucas
03 9645 1199
0418 888 751

Type: Townhouse
Date Available: 04/05/2018

Bond: \$3660
<https://www.resbymirvac.com>

ISSUE FOR COSTING

213C-SF3A-V
Coppin SG F1a
GA#:02.01



Living Area Schedule	
Ground Floor Living	87.21
First Floor Living	72.37
Grand Total	159.48

Total Area Schedule	
Ground Floor Living	87.21
First Floor Living	72.37
Garage	32.76
Porch	3.82
Grand Total	165.74

Window Schedule		
N.	Type	Type Comments
1	SA*AF12108	
2	SA*AF12113	
3	SA*AF12118	
4	SA*AF12118	
5	SA*AF # F2427T	
6	SA*AF-SPECIAL 3	SA0201442 G. BAR, ABRWING 2427T

Date	Rev	Amendment
18.11.15	4	ISSUE FOR COSTING - ESC Stage1
20.11.15	5	ISSUE FOR COSTING - ESC Stage 1, WINDOW SCHEDULE ADDED

PROJECT: PRODUCT DEVELOPMENT
 Mirvac Design
 1/100 St Albans Rd, St Albans, VIC 3023
 Tel: 03 9487 6600
 Fax: 03 9487 6781
 Email: design@mirvac.com.au
 www.mirvac.com.au



Drawn: BDC
 Approved: BDC
GENERAL ARRANGEMENT
 Job Number: 0300
 Plate: 213C-SF3A-V
 Date: 18.11.15
 Scale: @ A3: 1:100
 Drawing no: G-10
 Rev: B

Plans shown are only indicative of layout. Dimensions are approximate.

DONCASTER, VIC
53 Stables Circuit