



## DOCKLANDS, VIC

106A South Wharf Drive

1  
BED

1  
BATH

1  
CAR



### Brand New Studio

This brand new studio is set amongst the newest development here along the Yarras Edge Precinct.

Located at the base of the new townhouse and located on a quiet street this spacious studio is equipped with its own carport, street entry, bathroom and kitchenette.

The tenant of the studio will also have access to the facilities being the brand new Wharf Club which is a fully equipped gym, spa and pool.

To lease as an office with the potential permission of signage on the studio window or a city home this is the perfect little set up.

**\$350 per week**

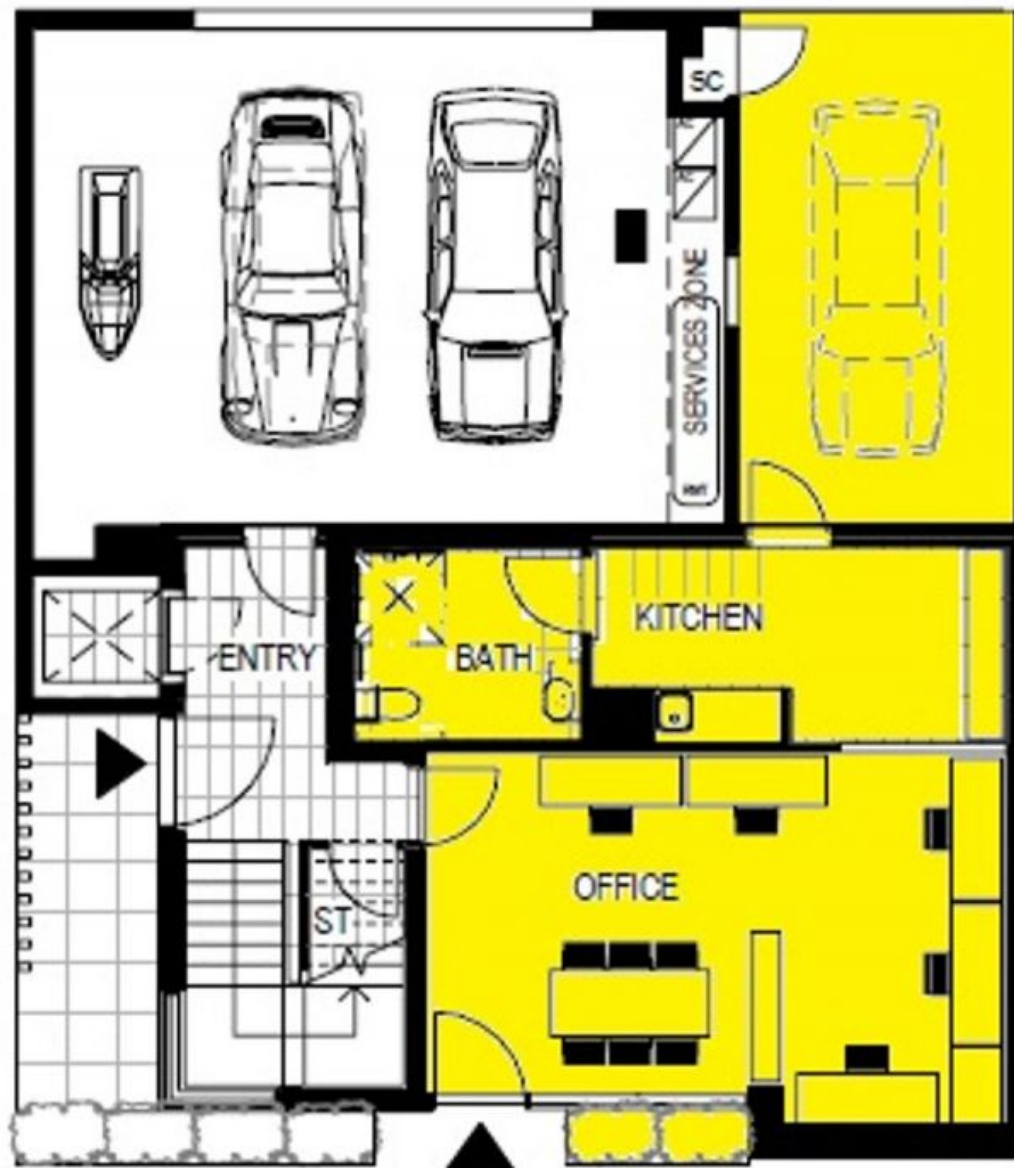
**Contact:** Baden Lucas  
03 9645 1199  
0418 888 751

**Type:** Studio

**Date Available:** 26/04/2018

**Bond:** \$2100

**<https://www.resbymirvac.com>**



GROUND FLOOR

Plans shown are only indicative of layout. Dimensions are approximate.

**DOCKLANDS, VIC**  
106A South Wharf Drive