



GLEBE, NSW

607/170 Ross Street

2 BED **1** BATH **1** CAR 

Deposit Taken!

- This 81sqm, Level 6 Apartment offers;
- 2-Bedroom Apartment in Harold Park
- Large bedrooms with generous built-in wardrobes
 - Spacious combined living and dining area
 - Stylish kitchen with stone benchtops and Miele appliances
 - Ultramodern bathroom with plenty of vanity storage
 - Sunny balcony, perfect for entertaining
 - Internal laundry with washer and dryer included
 - Secure car space and storage cage included
 - Ducted A/C, video intercom and NBN connectivity
 - 350m to the Heritage-listed Tramsheds, light rail station and public transport
 - Additional parking also available for a fee

Deposit Taken

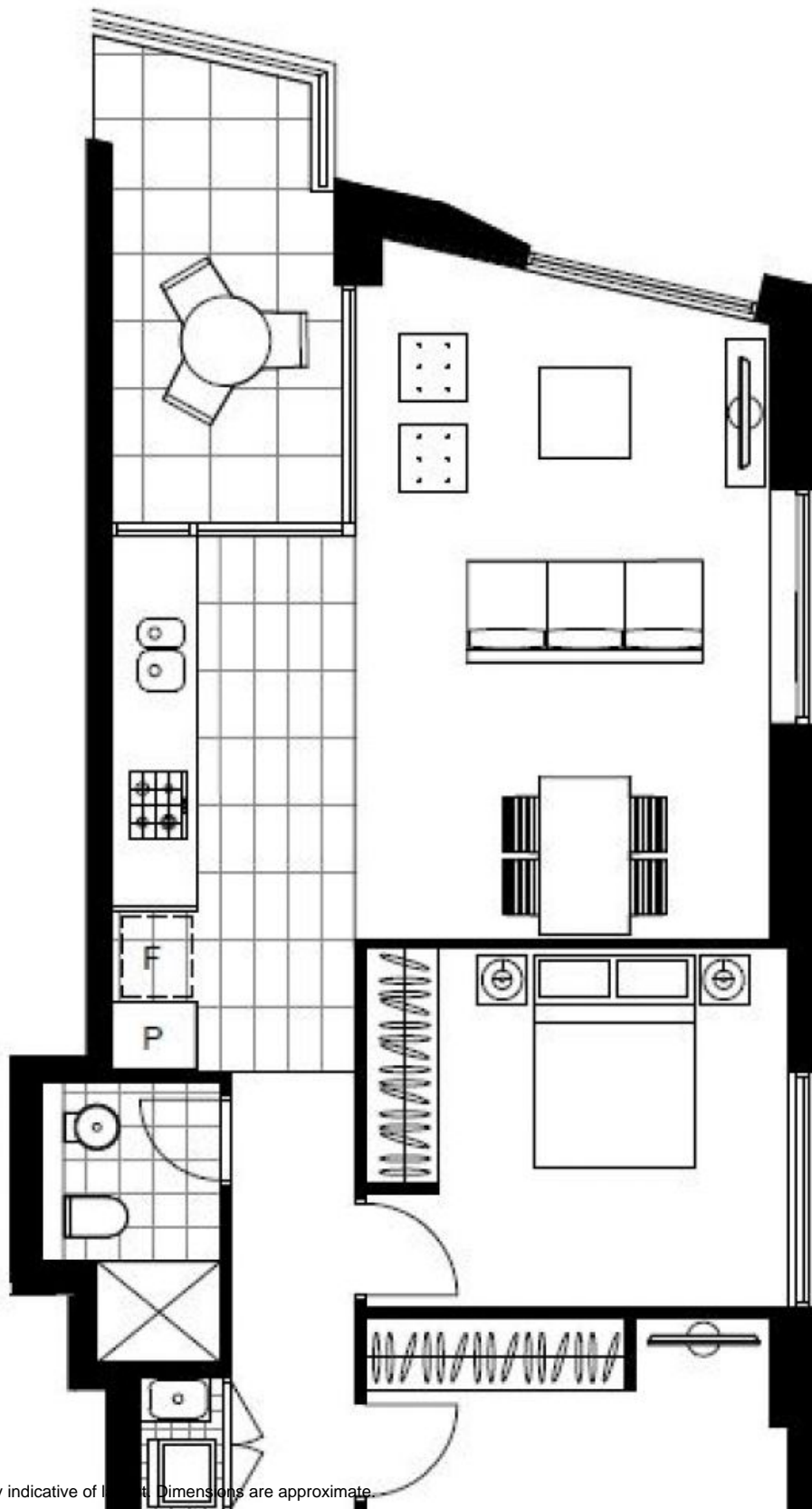
Contact: Matthew Matthews
02 8588 8888
0418 266 590

Type: Apartment

Date Available: 06/02/2020

Bond: \$3120

<https://www.resbymirvac.com>



Plans shown are only indicative of layout. Dimensions are approximate.

GLEBE, NSW
607/170 Ross Street