



GLEBE, NSW

607/170 Ross Street

2
BED

1
BATH

1
CAR



Deposit Taken!

This 81sqm, Level 6 Apartment offers;
2-Bedroom Apartment in Harold Park

- Large bedrooms with generous built-in wardrobes
- Spacious combined living and dining area
- Stylish kitchen with stone benchtops and Miele appliances
- Ultramodern bathroom with plenty of vanity storage
- Sunny balcony, perfect for entertaining
- Internal laundry with washer and dryer included
- Secure car space and storage cage included
- Ducted A/C, video intercom and NBN connectivity
- 350m to the Heritage-listed Tramsheds, light rail station and public transport
- Additional parking also available for a fee

Deposit Taken

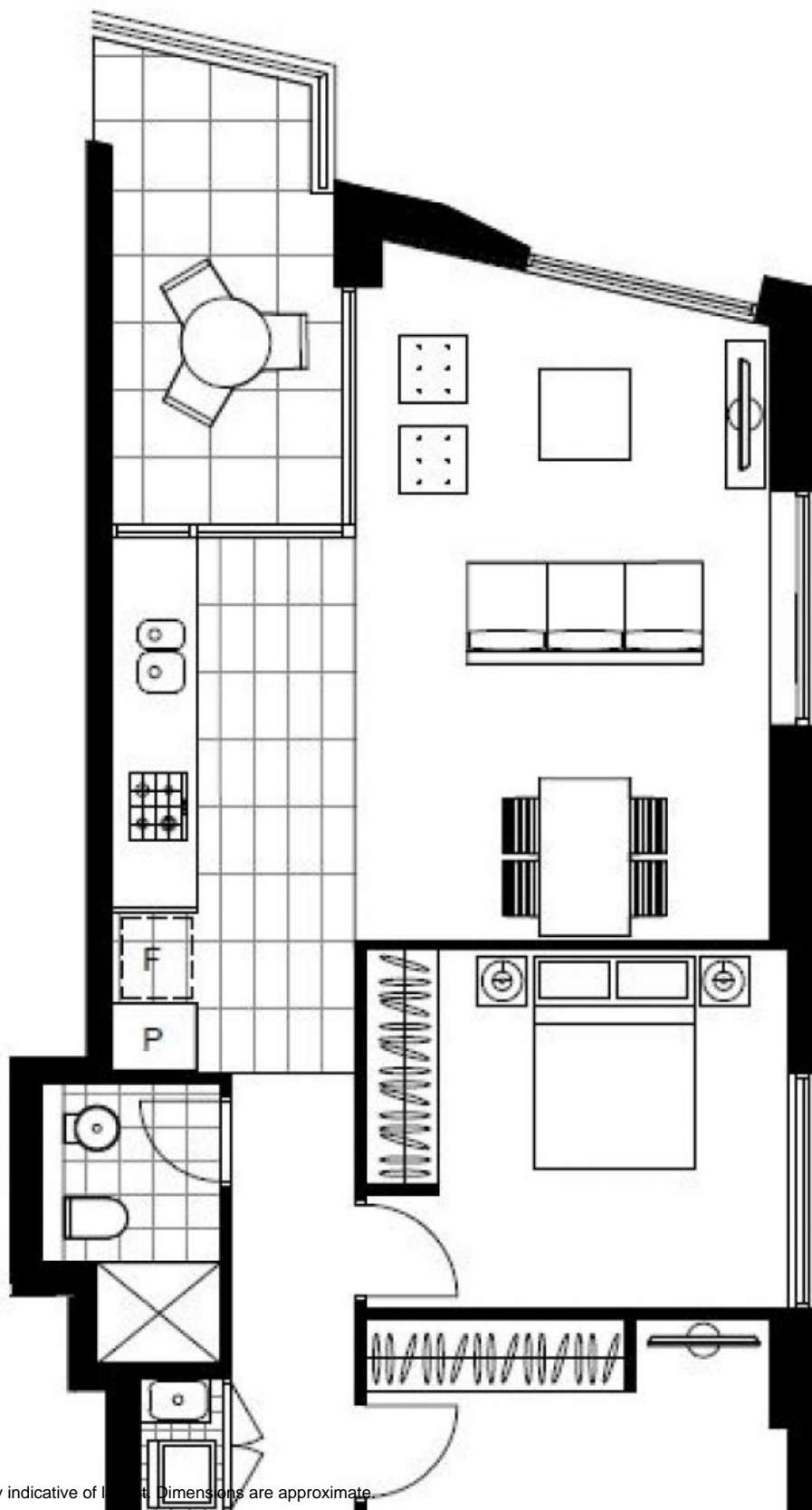
Contact: Matthew Matthews
02 8588 8888
0418 266 590

Type: Apartment

Date Available: 06/02/2020

Bond: \$3120

<https://www.resbymirvac.com>



Plans shown are only indicative of layout. Dimensions are approximate.

GLEBE, NSW
607/170 Ross Street