



DOCKLANDS, VIC

202/68 River Esplanade

2
BED

2
BATH

1
CAR



Spacious Modern Living with Spectacular Views

Spectacular views, contemporary styling and a sensational resort lifestyle are the hallmarks of this superb two bedroom waterfront Mirvac apartment. Brilliantly situated in the heart of Yarra's Edge - walking distance to a great choice of shops and eateries, Crown Casino and Melbourne's CBD.

A generous living and dining area well-served by a sleek gourmet kitchen featuring stone benches, is complemented by magnificent marina and city views on offer through the floor to ceiling windows and full-length massive entertainer's balcony. A luxurious main bedroom with bright en-suite and built in robes is matched by a second double bedroom with built in robe and second bathroom.

\$700 per week

Contact: Baden Lucas
03 9645 1199
0418 888 751

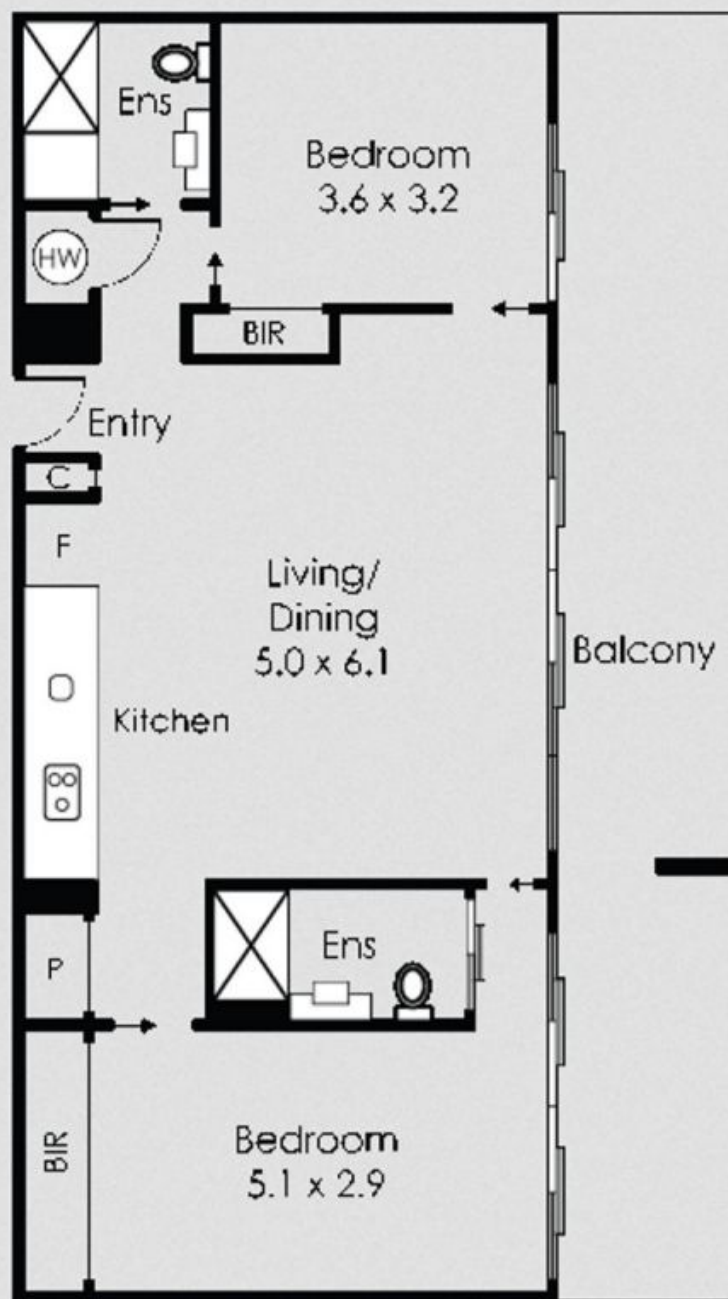
Type: Apartment

Date Available: 07/05/2018

Bond: \$4200

<https://www.resbymirvac.com>

202/68 River Esplanade, Docklands



Plans shown are only indicative of layout. Dimensions are approximate.

DOCKLANDS, VIC
202/68 River Esplanade