

## ZETLAND, NSW

806/2-6 Ebsworth Street

**2** BED **2** BATH **1** CAR



### Brand New, Split 2-Bedroom Apartment in Zetland!

This Level 8, 101sqm 2-Bedroom Apartment features;

- Large bedrooms with floor to ceiling built-in wardrobes
- Open plan living and dining area flowing onto balcony
- Modern kitchen with stone benchtops and built-in appliances
- Sleek bathrooms with plenty of storage, ensuite off master bedroom
- North facing balcony with access from living and bedrooms
- Internal laundry with dryer included
- Secure basement car space and storage cage included
- Ducted A/C, video intercom and NBN connectivity
- Close to Woolworths, 'The Social Corner' and Green Square Train Station.

**860**

**Contact:**

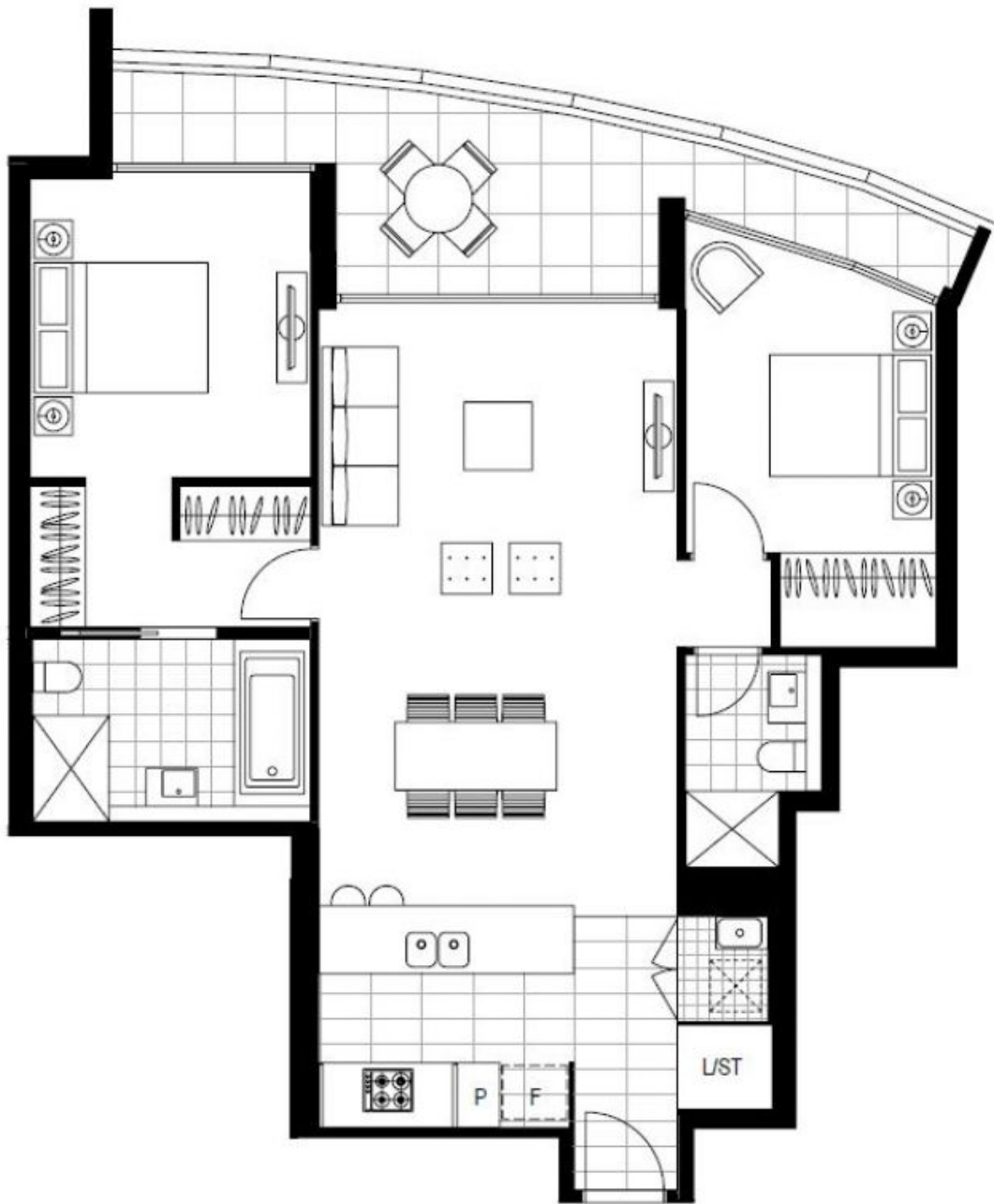
Georgia Glynn  
02 8588 8888  
0481 388 777  
Carmen Whiteley  
02 8588 8888  
0497 555 519

**Type:** Apartment

**Date Available:** 26/05/2018

**Bond:** \$3440

<https://www.resbymirvac.com>



Plans shown are only indicative of layout. Dimensions are approximate.

**ZETLAND, NSW**  
806/2-6 Ebsworth Street