



## ZETLAND, NSW

708/28 Ebsworth Street

**1**  
BED

**1**  
BATH



### Modern, 1-Bedroom Apartment with Separate Study Room in Green Square

This Level 7, 68sqm, 1-Bedroom + Study Apartment features;

- Large bedroom with floor to ceiling built-in wardrobes
- Separate study room perfect for home office
- Sleek bathroom with plenty of storage
- Modern kitchen with stone benchtops and Miele appliances
- Integrated refrigerator included
- Open plan living and dining area with built-in TV cabinetry
- Entertainers' balcony with dual access from living and bedroom
- Internal laundry with washing machine and dryer included
- Secure storage cage included
- Ducted A/C, video intercom and NBN connectivity

### More apartments available!

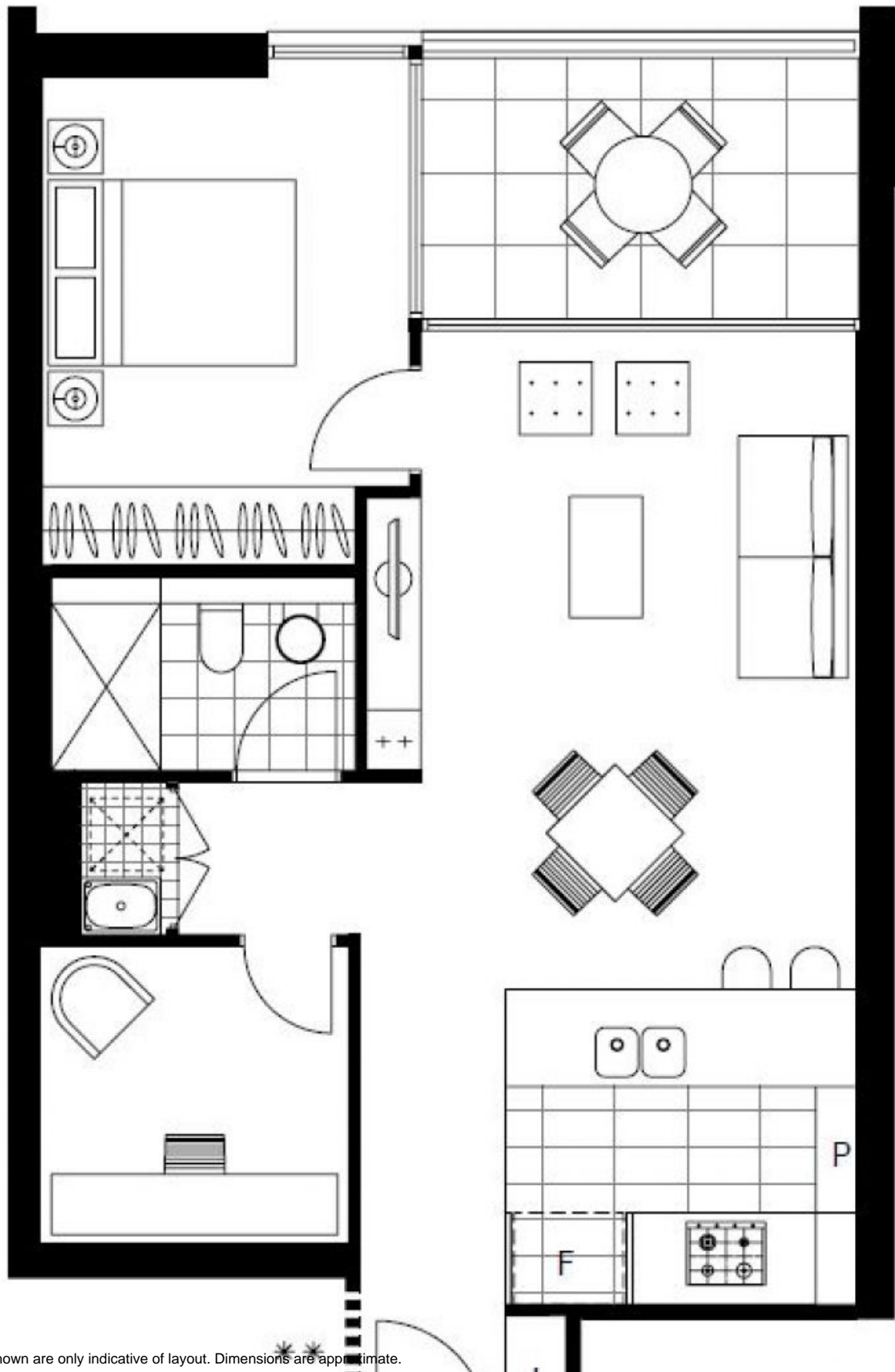
**Contact:** Carmen Whiteley  
02 8588 8888  
0497 555 519

**Type:** Apartment

**Date Available:** 03/05/2021

**Bond:** \$2240

<https://www.resbymirvac.com>



Plans shown are only indicative of layout. Dimensions are approximate.

**ZETLAND, NSW**  
708/28 Ebsworth Street