

ZETLAND, NSW

206/2-6 Ebsworth Street

1
BED

1
BATH



Brand New, North-West Facing 1-Bedroom Apartment in 'Ovo'

This Level 2, 53sqm 1-Bedroom Apartment features;

- Large bedroom with floor to ceiling built-in wardrobe
- Fully tiled living and dining area flowing onto balcony
- Modern kitchen with stone benchtop and built-in appliances
- North-West facing balcony with access from living area
- Sleek bathroom with plenty of storage
- Internal laundry with dryer include
- Secure storage cage included
- Ducted A/C, video intercom and NBN connectivity
- Close to Woolworths, 'The Social Corner' and Green Square Train Station.

590

Contact:

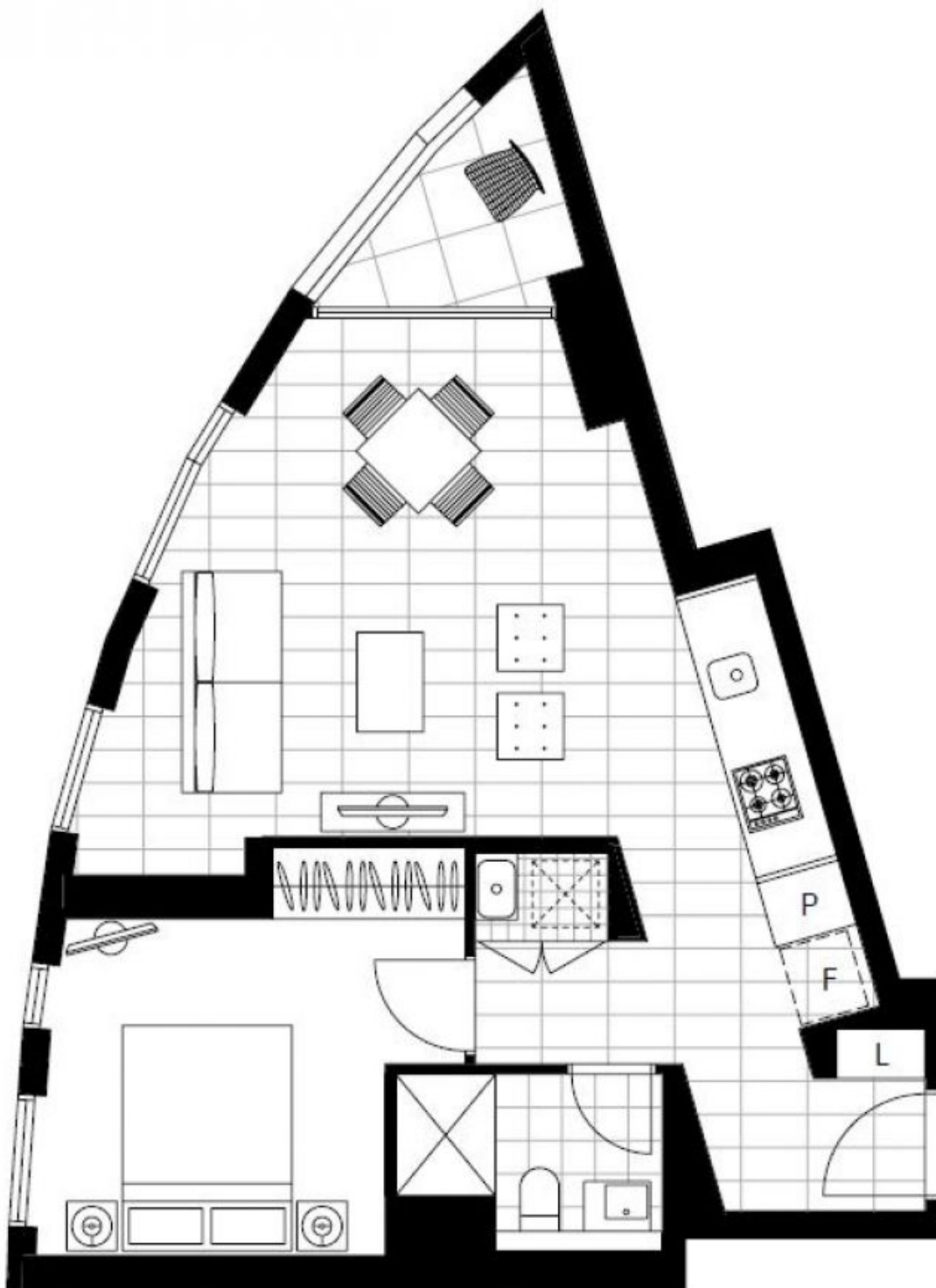
Georgia Glynn
02 8588 8888
0481 388 777
Carmen Whiteley
02 8588 8888
0497 555 519

Type: Apartment

Date Available: 21/05/2018

Bond: \$2360

<https://www.resbymirvac.com>



Plans shown are only indicative of layout. Dimensions are approximate.

ZETLAND, NSW
206/2-6 Ebsworth Street