



ZETLAND, NSW

1006/6 Ebsworth Street

2 **2** **1** 
BED BATH CAR

Modern, North Facing 2-Bedroom Apartment in Zetland!

This Level 10, 103sqm 2-Bedroom Apartment features;

- Large bedrooms with floor to ceiling built-in wardrobes
- Separate media nook with built-in desk, perfect for a home office
- Open plan living and dining area flowing onto North facing entertainers' balcony
- Modern kitchen with stone benchtop and built-in European appliances
- Internal laundry with dryer included
- Sleek bathrooms with plenty of storage, ensuite with bath off master bedroom
- Secure basement car space and storage cage included
- Ducted A/C, video intercom and NBN connectivity

DEPOSIT TAKEN

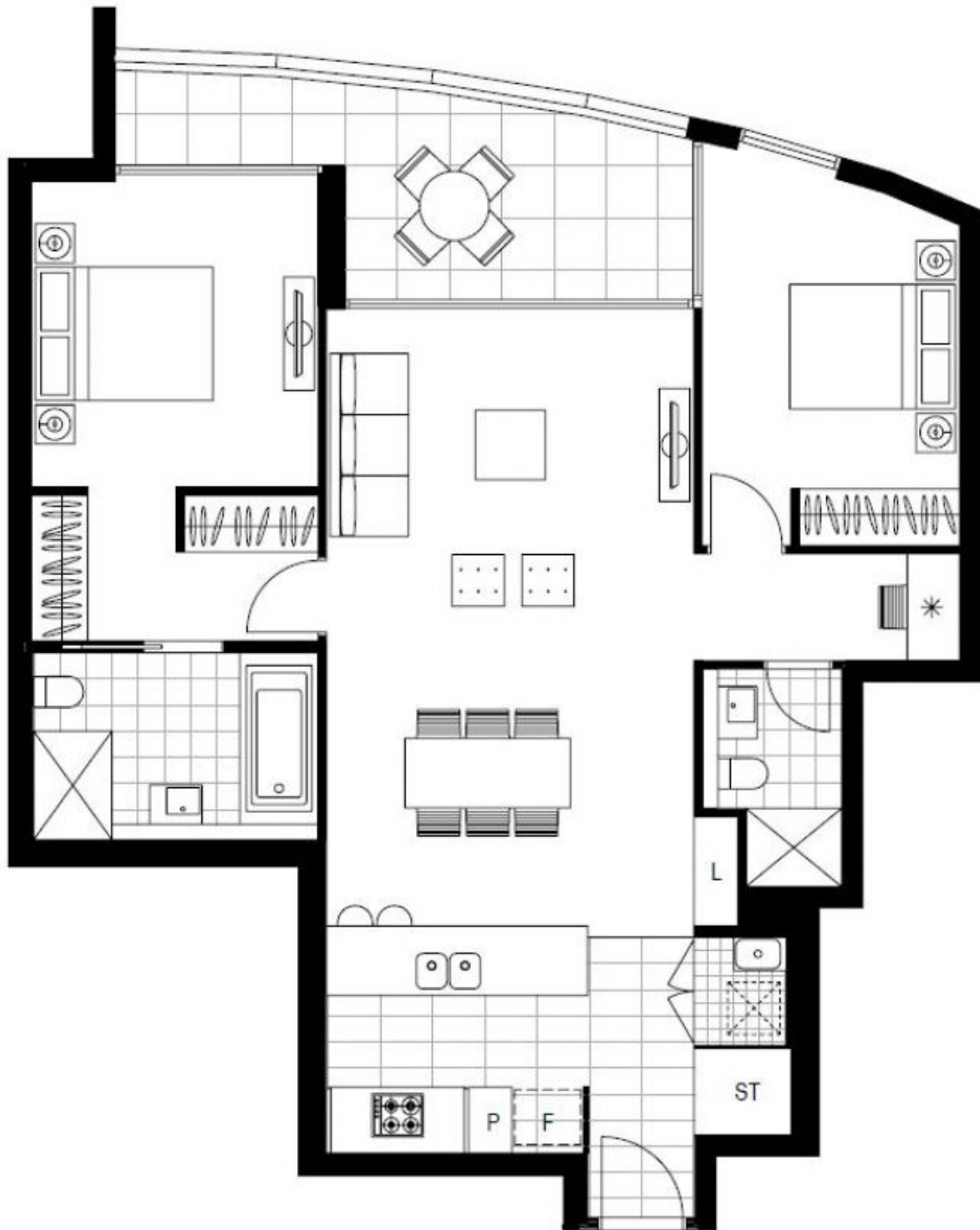
Contact: Carmen Whiteley
02 8588 8888
0497 555 519

Type: Apartment

Date Available: 09/06/2021

Bond: \$3120

<https://www.resbymirvac.com>



Plans shown are only indicative of layout. Dimensions are approximate.

ZETLAND, NSW
1006/6 Ebsworth Street