

ZETLAND, NSW

706/28 Ebsworth Street

1
BED

1
BATH



Luxurious layout and location

Laid out around a balcony with cityscape views, this neat apartment has a luxury of space affording a dedicated study. Natural light, beautifully considered finishes and an impeccable setting deliver an easy lifestyle. Convenience is the hero with cafes, independent retail stores, Woolworths and public transport options a stroll away.

- Trademark Mirvac quality and attention to detail
- Living area soaks in the city outlook, awash with natural light
- Stone and gas kitchen with Miele stainless appliances
- Glass sliders link living space and bedroom with balcony
- Built-in wardrobe in bedroom, European laundry with linen press
- Calming natural palette of greys and whites
- Recessed TV wall with integrated cabinetry, ducted AC

Price Guide \$735,000

Council Rates: \$985/year (approx)

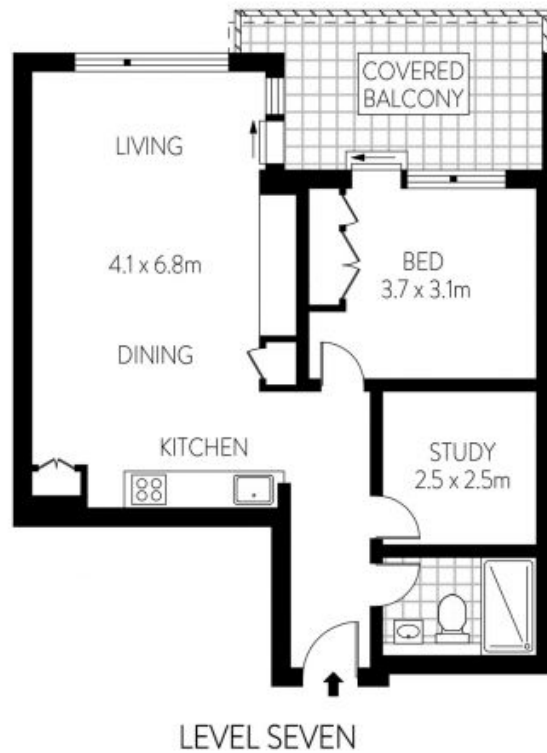
Strata Rates: \$3,549/year (approx)

Contact: Matthew Matthews
02 8588 8888
0418 266 590

Type: Apartment

Sold Date: 23/04/2021

<https://www.resbymirvac.com>



0 1 2 3
SCALE (METRES)

PLANS SHOWN ONLY INDICATIVE OF LAYOUT. DIMENSIONS ARE APPROXIMATE.
Floor plans by www.renmaustralia.com
Ref. No. 14443

INTERNAL
BALCONY

: 59.32m²
: 10.92m²



**real estate
services**
by mirvac

706/28 EBSWORTH STREET

ZETLAND

Plans shown are only indicative of layout. Dimensions are approximate.

ZETLAND, NSW
706/28 Ebsworth Street