

DEPOSIT TAKEN

More apartments available for lease in Green Square - Zetland!

Please call 0497 555 519 or email carmen.whiteley@resbymirvac.com for more information



GREEN SQUARE



ZETLAND, NSW 406/6 Ebsworth Street

2
BED

1
BATH



Bright 2-Bedroom Apartment in Green Square

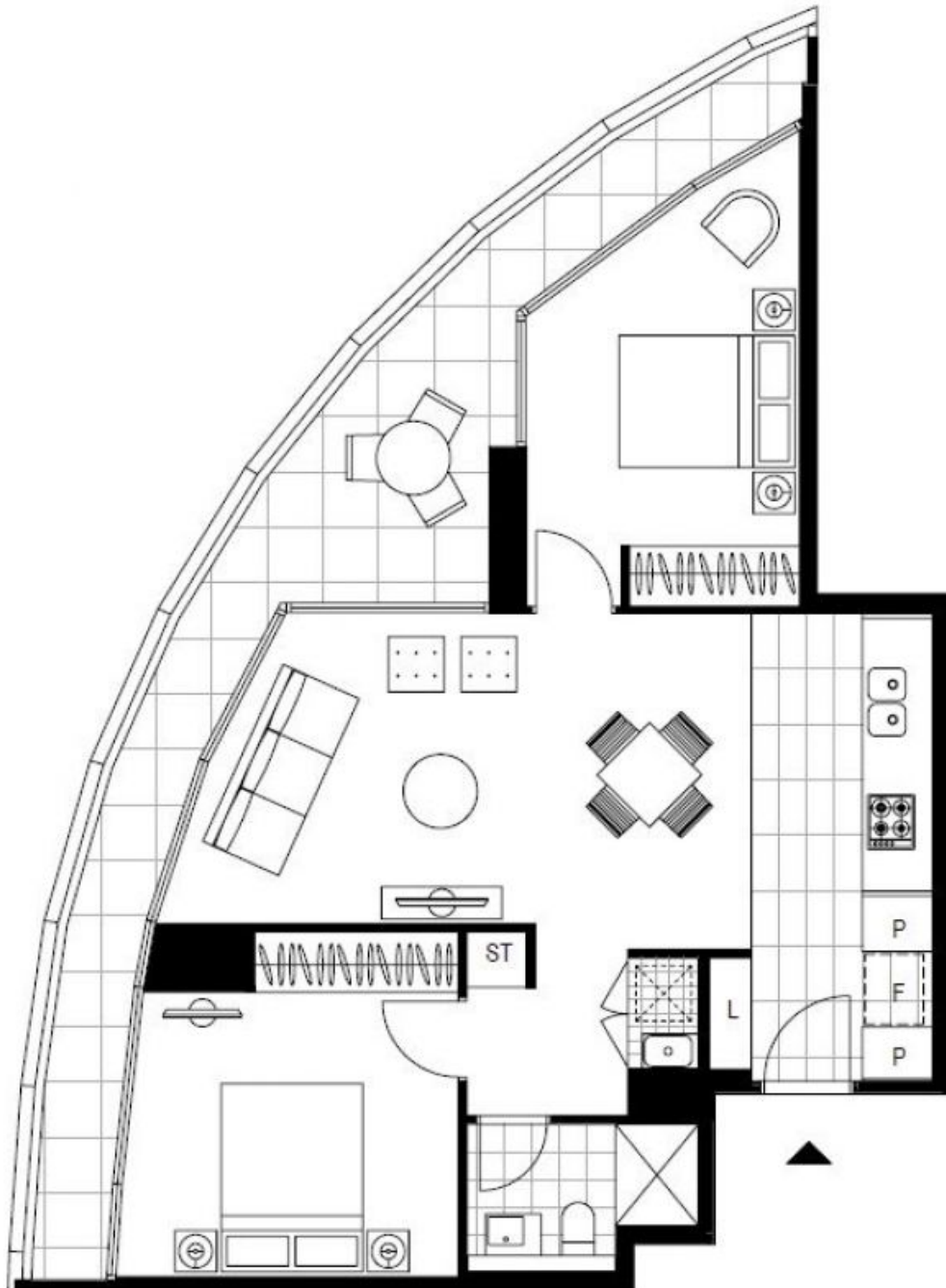
This 82sqm, 2-Bedroom Apartment features:

- Spacious bedrooms with generous built-in wardrobes
- Open-plan living and dining area with access to the balcony
- Modern kitchen with stone benchtop and Smeg appliances
- Sleek bathroom with plenty of vanity storage
- Internal laundry with dryer included
- Secure storage cage included
- Ducted A/C, video intercom and NBN connectivity
- 300m to Woolworths, The Social Corner and Green Square Train Station (10mins to the City)

Call 0497 555 519 for similar apartments!

Contact: Carmen Whiteley
02 8588 8888
0497 555 519
Type: Apartment
Date Available: 23/07/2020
Bond: \$2380
<https://www.resbymirvac.com>

For more information please contact Real Estate Services by Mirvac on 02 8588 8888 or email enquiries@resbymirvac.com - Your Onsite Agent!



Plans shown are only indicative of layout. Dimensions are approximate.

ZETLAND, NSW
406/6 Ebsworth Street