



ZETLAND, NSW

1303/2-6 Ebsworth Street

1
BED

1
BATH



DEPOSIT TAKEN - LEASED PRIOR TO SETTLEMENT!

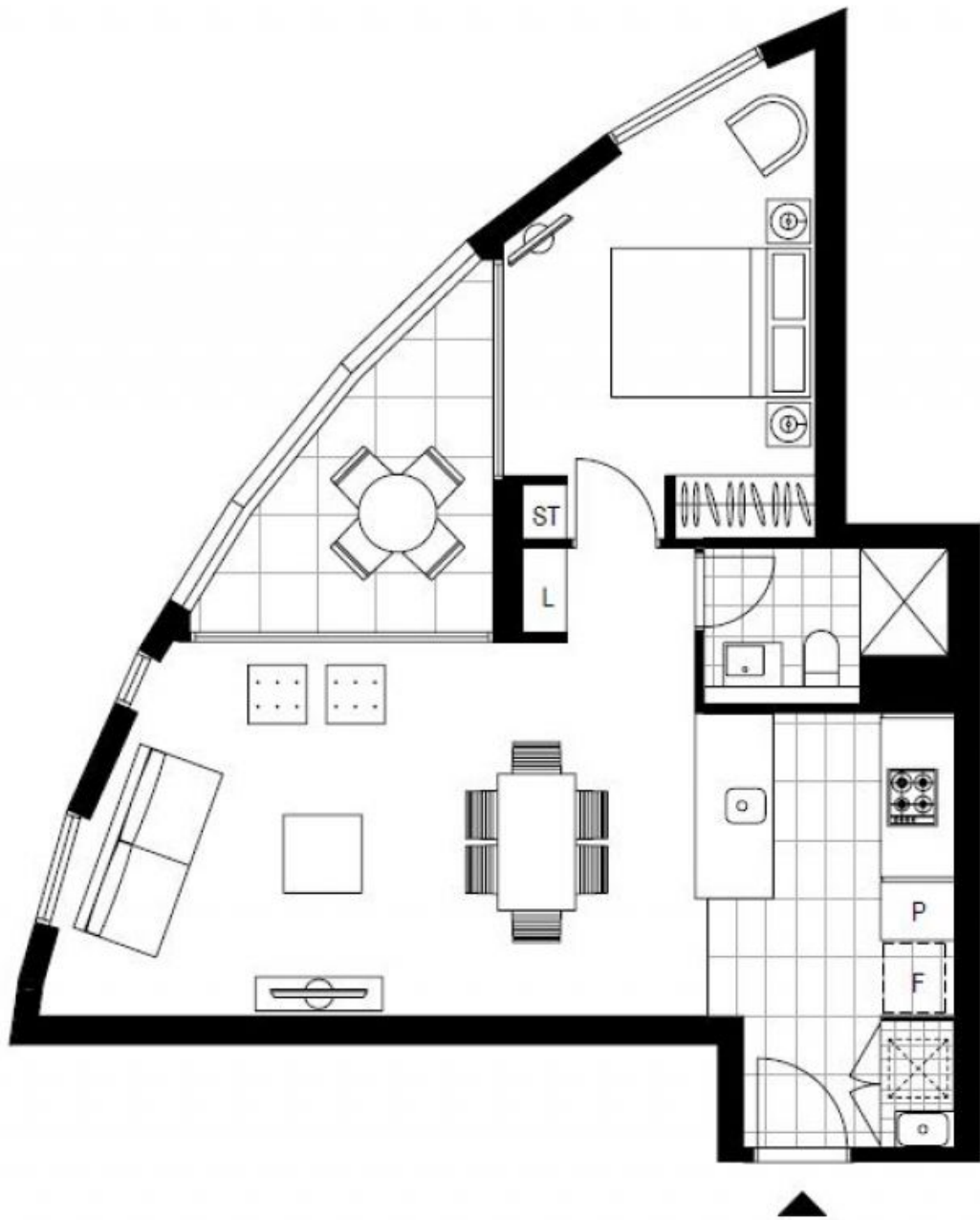
This Level 13, 61sqm 1-Bedroom Apartment features;

- Large bedroom with floor to ceiling built-in wardrobe
- Open plan living and dining area flowing onto balcony
- Modern kitchen with stone benchtops and built-in appliances
- West facing balcony with sweeping views of the city skyline
- Internal laundry with dryer included
- Sleek bathroom with plenty of storage
- Secure basement storage cage included
- Ducted A/C, video intercom and NBN connectivity
- Close to Woolworths, 'The Social Corner' and Green Square Train Station.

DEPOSIT TAKEN

Contact: Georgia Glynn
02 8588 8888
0481 388 777
Carmen Whiteley
02 8588 8888
0497 555 519

Type: Apartment
Date Available: 09/06/2018
Bond: \$2520
<https://www.resbymirvac.com>



Plans shown are only indicative of layout. Dimensions are approximate.

ZETLAND, NSW
1303/2-6 Ebsworth Street