

ZETLAND, NSW

707/18 Ebsworth Street

1
BED

1
BATH



Spacious 1-Bedroom Apartment located in Zetland

This 57sqm, 7th floor 1-Bedroom Apartment offers;

- Modern kitchen with stone benchtop and Smeg appliances
- Well-appointed bedroom with floor to ceiling built-in wardrobe
- Sleek bathroom with plenty of storage
- South-West facing balcony with access from living area and bedroom
- Internal laundry with dryer included
- Ducted A/C, video intercom and NBN connectivity
- Secure basement storage cage provided
- Walking distance to Woolworths, The Social Corner and Green Square Train Station

DEPOSIT TAKEN

Contact: Georgia Glynn
02 8588 8888
0481 388 777
Carmen Whiteley
02 8588 8888
0497 555 519

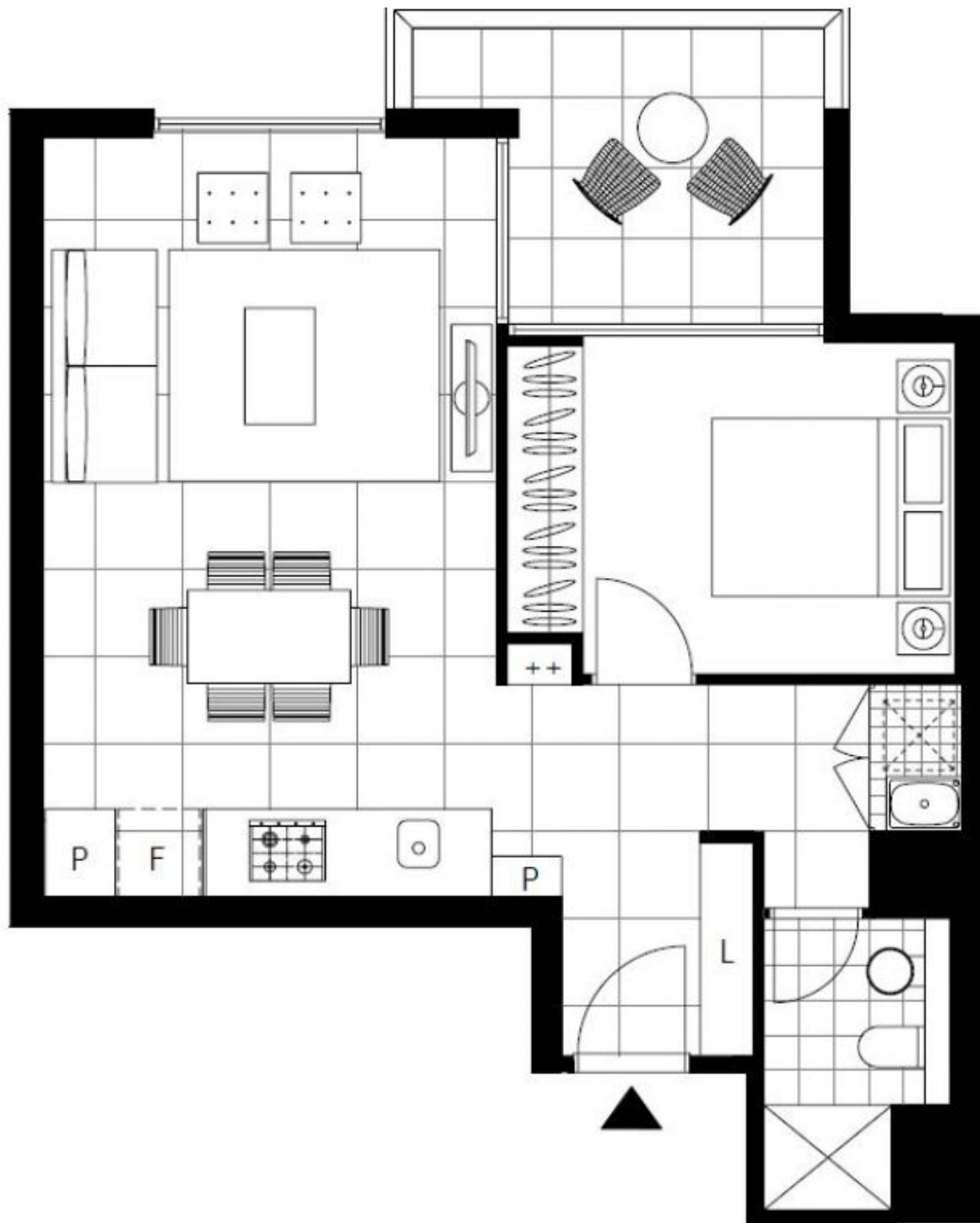
Type: Apartment

Date Available: 14/04/2018

Bond: \$2480

<https://www.resbymirvac.com>

For more information, please contact Real Estate Services by Mirvac on 02 8588 8888 or email enquiries@resbymirvac.com



Plans shown are only indicative of layout. Dimensions are approximate.

ZETLAND, NSW
707/18 Ebsworth Street