



**GLEBE, NSW**  
6301/162 Ross Street

**1**  
BED

**1**  
BATH



### Deposit Taken!

- This 54sqm, 3rd floor Apartment offers;
- Garden Facing 1-Bedroom Apartment in Harold Park
  - Large bedroom with floor to ceiling built-in wardrobe
  - Balcony with view over internal gardens
  - Stone benchtops and Miele appliances in kitchen
  - Modern bathroom with vanity storage
  - Tiled, open-plan living and dining
  - Secure basement storage cage included
  - Ducted A/C, video intercom and NBN connectivity
  - 400m to buses, the light rail and Tramsheds

\*\*images indicative only\*\*

### Deposit Taken

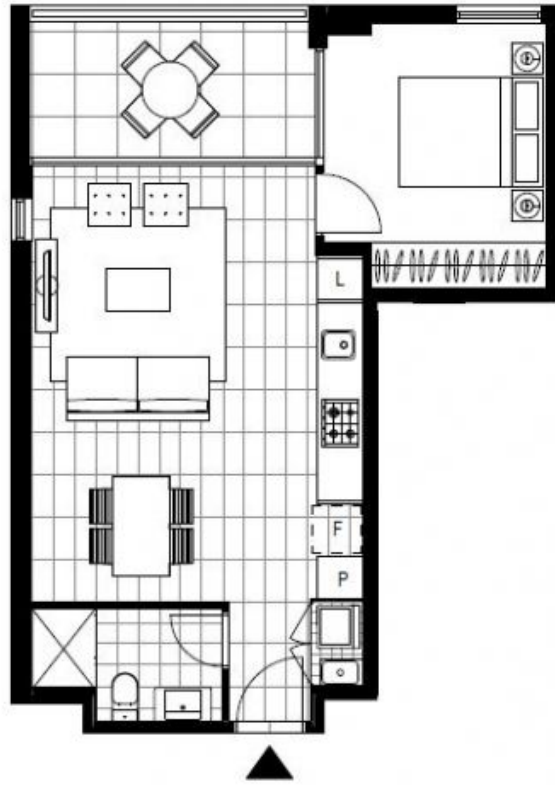
**Contact:** Matthew Matthews  
02 8588 8888  
0418 266 590

**Type:** Apartment

**Date Available:** 12/11/2018

**Bond:** \$2280

<https://www.resbymirvac.com>



▲  
LEVEL 3

Plans shown are only indicative of layout. Dimensions are approximate.

**GLEBE, NSW**  
6301/162 Ross Street