



GLEBE, NSW
6301/162 Ross Street

1
BED

1
BATH



Deposit Taken!

- This 54sqm, 3rd floor Apartment offers;
- Garden Facing 1-Bedroom Apartment in Harold Park
 - Large bedroom with floor to ceiling built-in wardrobe
 - Balcony with view over internal gardens
 - Stone benchtops and Miele appliances in kitchen
 - Modern bathroom with vanity storage
 - Tiled, open-plan living and dining
 - Secure basement storage cage included
 - Ducted A/C, video intercom and NBN connectivity
 - 400m to buses, the light rail and Tramsheds

images indicative only

Deposit Taken

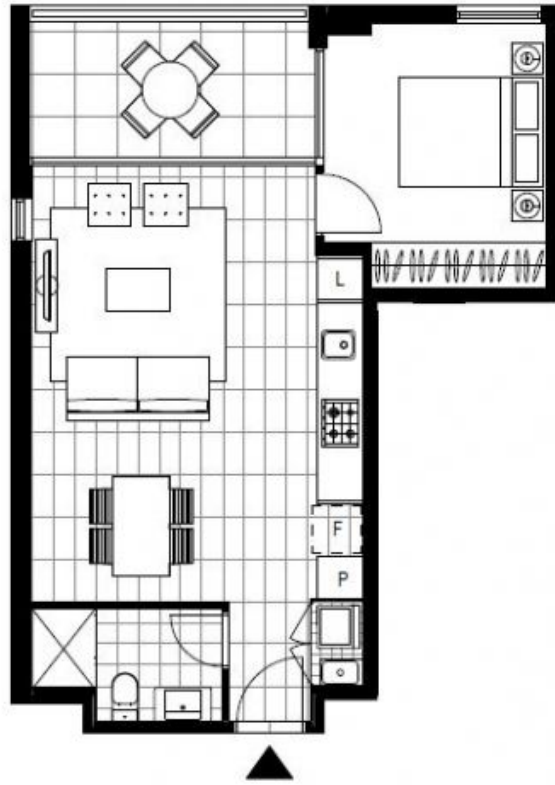
Contact: Matthew Matthews
02 8588 8888
0418 266 590

Type: Apartment

Date Available: 12/11/2018

Bond: \$2280

<https://www.resbymirvac.com>



▲
LEVEL 3

Plans shown are only indicative of layout. Dimensions are approximate.

GLEBE, NSW
6301/162 Ross Street