



ZETLAND, NSW
610/28 Ebsworth Street

2 **2** **1** 
BED BATH CAR

Oversized 2-Bedroom Apartment with Stunning City Views

This 114sqm, 6th floor Apartment features:

- Spacious bedrooms with generous built-in wardrobes
- Open-plan living and dining area, leading to the balcony
- Modern kitchen with stone benchtops and Smeg appliances
- Sleek bathrooms with generous vanity storage, bath in main
- North-east facing balcony with district and city views
- Internal laundry with dryer included
- Hidden study nook at entry, perfect for a home office
- Secure car space and storage cage included
- Ducted A/C, video intercom and NBN connectivity
- 300m to Woolworths, The Social Corner and Green Square Train Station (10mins to the City)

DEPOSIT TAKEN - Inspection Cancelled!

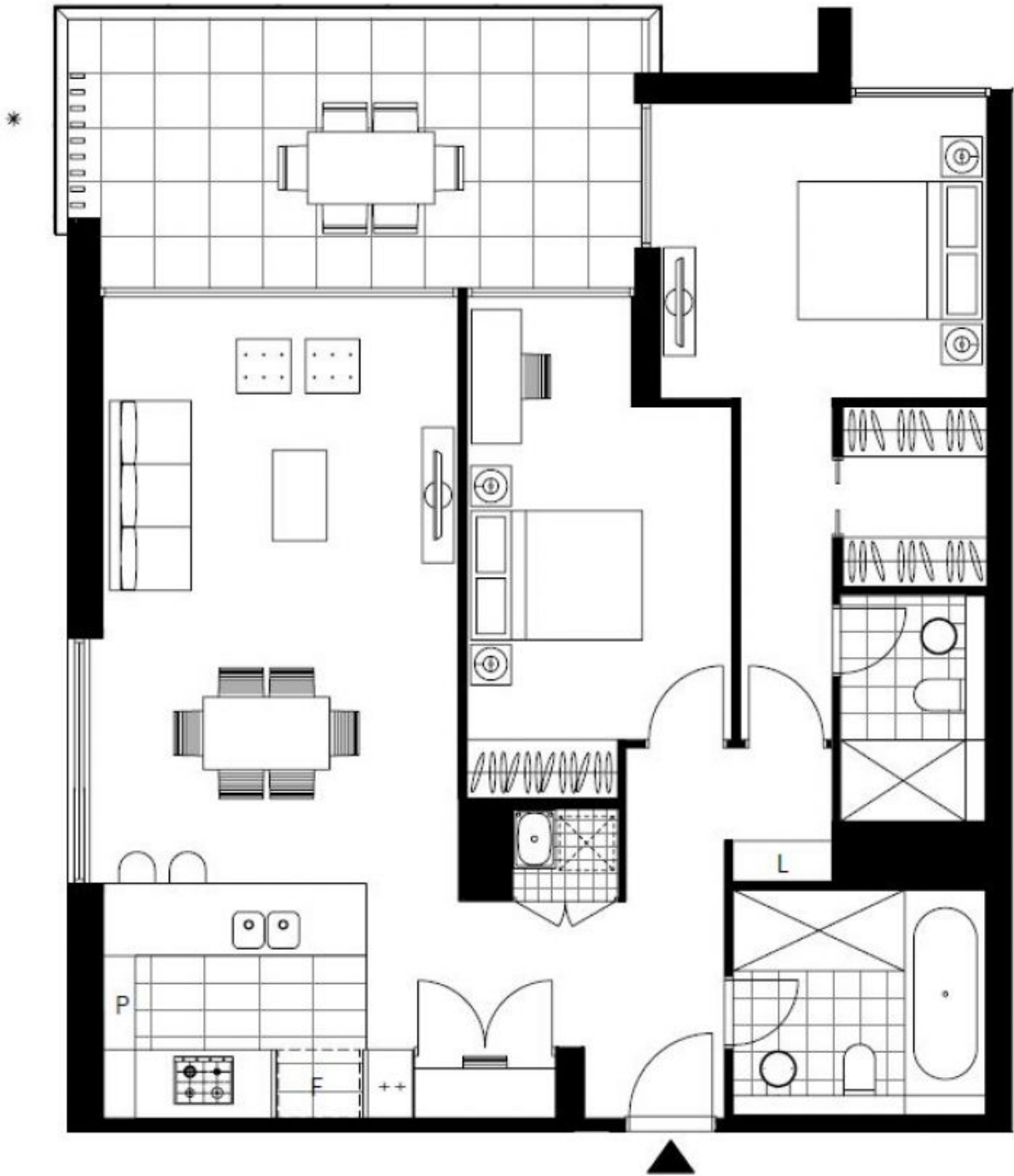
Contact: Carmen Whiteley
02 8588 8888
0497 555 519

Type: Apartment

Date Available: 18/05/2019

Bond: \$3200

<https://www.resbymirvac.com>



Plans shown are only indicative of layout. Dimensions are approximate.

ZETLAND, NSW
610/28 Ebsworth Street