

ZETLAND, NSW

703/28 Ebsworth Street

2 **2** **1** 
BED BATH CAR

Modern 2-Bedroom Apartment with Study Nook in Green Square

This 97sqm, Level 7 Apartment has to offer:

- Modern kitchen with stone benchtops and Smeg appliances
- Spacious bedrooms with floor to ceiling built-in wardrobes
- Study nook at entry, perfect for a home office
- Sleek bathrooms with ensuite off master
- Large balcony with access from living area
- Internal laundry with dryer included
- Secure basement car space and storage cage included
- Ducted A/C, video intercom and NBN connectivity
- 300m to Woolworths, The Social Corner and Green Square Train Station (10mins to the City)

DEPOSIT TAKEN

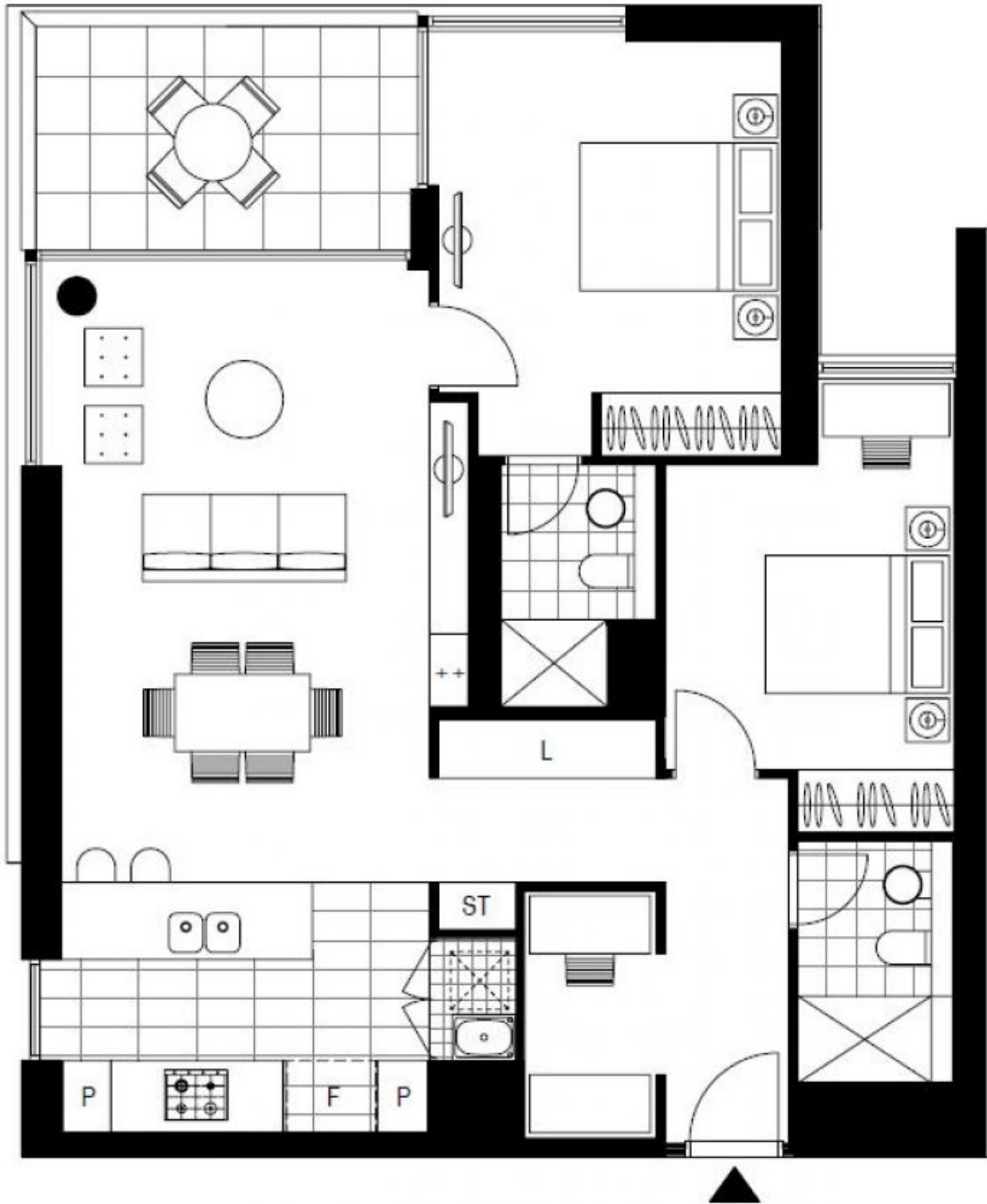
Contact: Carmen Whiteley
02 8588 8888
0497 555 519

Type: Apartment

Date Available: 07/04/2020

Bond: \$2800

<https://www.resbymirvac.com>



Plans shown are only indicative of layout. Dimensions are approximate.

ZETLAND, NSW
703/28 Ebsworth Street