



GLEBE, NSW

6705/162 Ross Street

1
BED

1
BATH



Over-sized 1 Bedroom Apartment in Harold Park

This apartment on level 7 offers:

- Open-plan living and dining area
- Large bedroom with built-in wardrobe
- Separate study nook
- Modern kitchen with stone bench tops and Miele appliances
- Spacious garden facing large balcony
- Internal washing machine & dryer included
- Basement storage cage
- Sorry, pets not permitted
- Walking distance to buses, the light rail and Tramsheds retail precinct

images indicative only

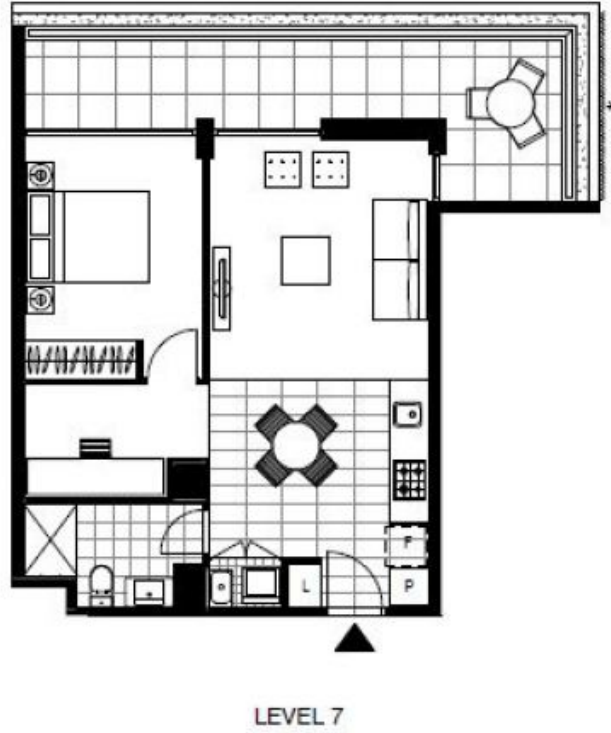
600

Contact: Naz Sabzpouri
02 8588 8888
0401 545 440

Type: Apartment
Date Available: 06/04/2018

Bond: \$2400

<https://www.resbymirvac.com>



Plans shown are only indicative of layout. Dimensions are approximate.

GLEBE, NSW
6705/162 Ross Street