



## GLEBE, NSW

6705/162 Ross Street

**1**  
BED

**1**  
BATH



### Over-sized 1 Bedroom Apartment in Harold Park

This apartment on level 7 offers:

- Open-plan living and dining area
- Large bedroom with built-in wardrobe
- Separate study nook
- Modern kitchen with stone bench tops and Miele appliances
- Spacious garden facing large balcony
- Internal washing machine & dryer included
- Basement storage cage
- Sorry, pets not permitted
- Walking distance to buses, the light rail and Tramsheds retail precinct

**\*\*images indicative only\*\***

**600**

**Contact:**

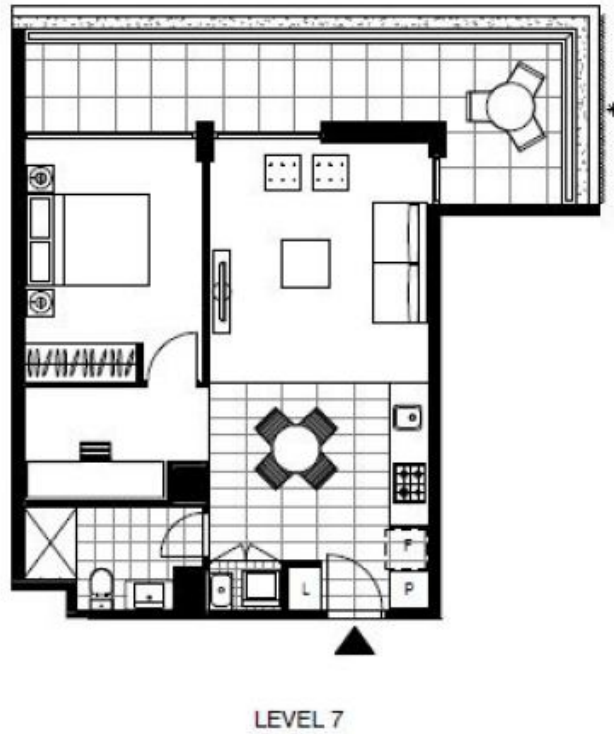
Naz Sabzpouri  
02 8588 8888  
0401 545 440

**Type:** Apartment

**Date Available:** 06/04/2018

**Bond:** \$2400

**<https://www.resbymirvac.com>**



Plans shown are only indicative of layout. Dimensions are approximate.

**GLEBE, NSW**  
6705/162 Ross Street