

## GLEBE, NSW

409/172 Ross Street

**1**  
BED

**1**  
BATH



### Deposit Taken!

This 63sqm, 4th floor Apartment features:

- Large 1-Bedroom Apartment in Vance, Harold Park
- Spacious bedroom with generous built-in wardrobe
- Open-plan living and dining area
- Modern Island kitchen with stone benchtops and Miele appliances
- Ultramodern bathrooms with plenty of storage
- Sunny balcony, overlooking the internal gardens
- Internal laundry with washer and dryer included
- Secure storage cage included
- Ducted A/C, video intercom and NBN connectivity
- 300m to the Heritage-listed Tramsheds, light rail station and public transport

### Deposit Taken

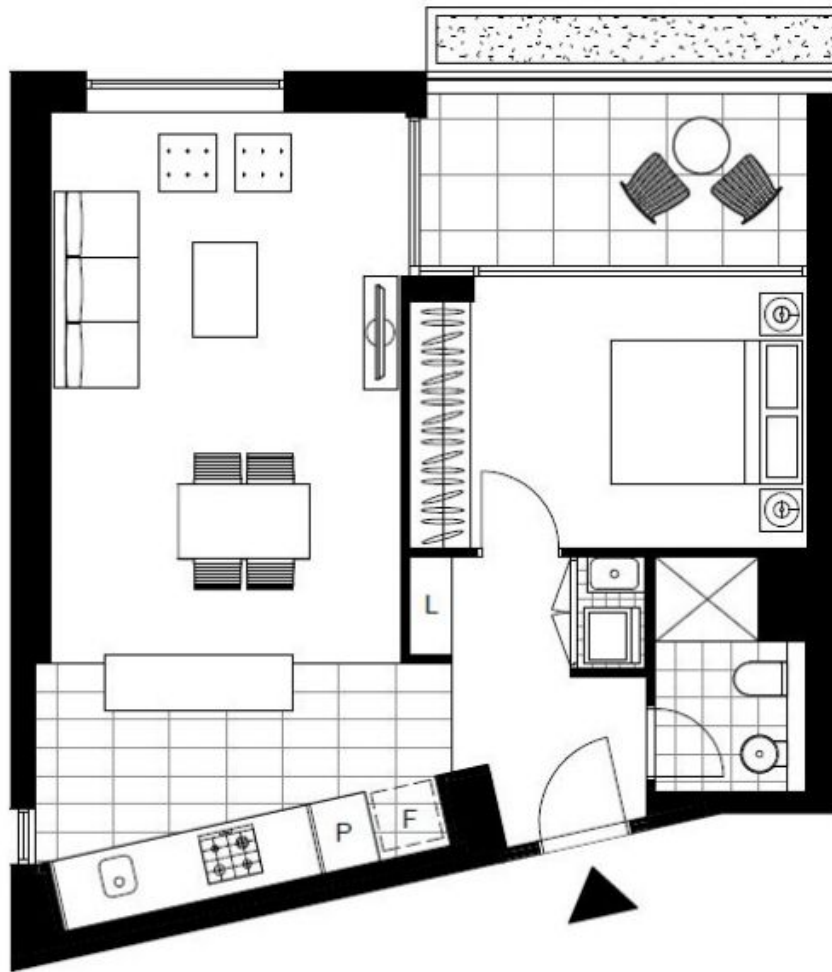
**Contact:** Matthew Matthews  
02 8588 8888  
0418 266 590

**Type:** Apartment

**Date Available:** 05/03/2020

**Bond:** \$2400

<https://www.resbymirvac.com>



LEVEL 4

Plans shown are only indicative of layout. Dimensions are approximate.

**GLEBE, NSW**  
409/172 Ross Street