

ZETLAND, NSW

411/18 Ebsworth Street

2 BED **2** BATH **1** CAR 

2-Bedroom Apartment with city views!

This 95sqm, level 4 apartment features:

- Modern kitchen with stone benchtops and Miele appliances
- Large living space with direct access to balcony
- Double bedrooms with floor to ceiling built-ins
- Internal laundry with Fisher and Paykel dryer included
- Secure parking in basement with separate storage cage
- Ducted A/C, video intercom and NBN connectivity
- Walking distances to Woolworths, The Social Corner and Green Square train station

Contact our team from Real Estate Services by Mirvac on 02 8588 8888 for more information

820

Contact:

Matthew Matthews

02 8588 8888

0418 266 590

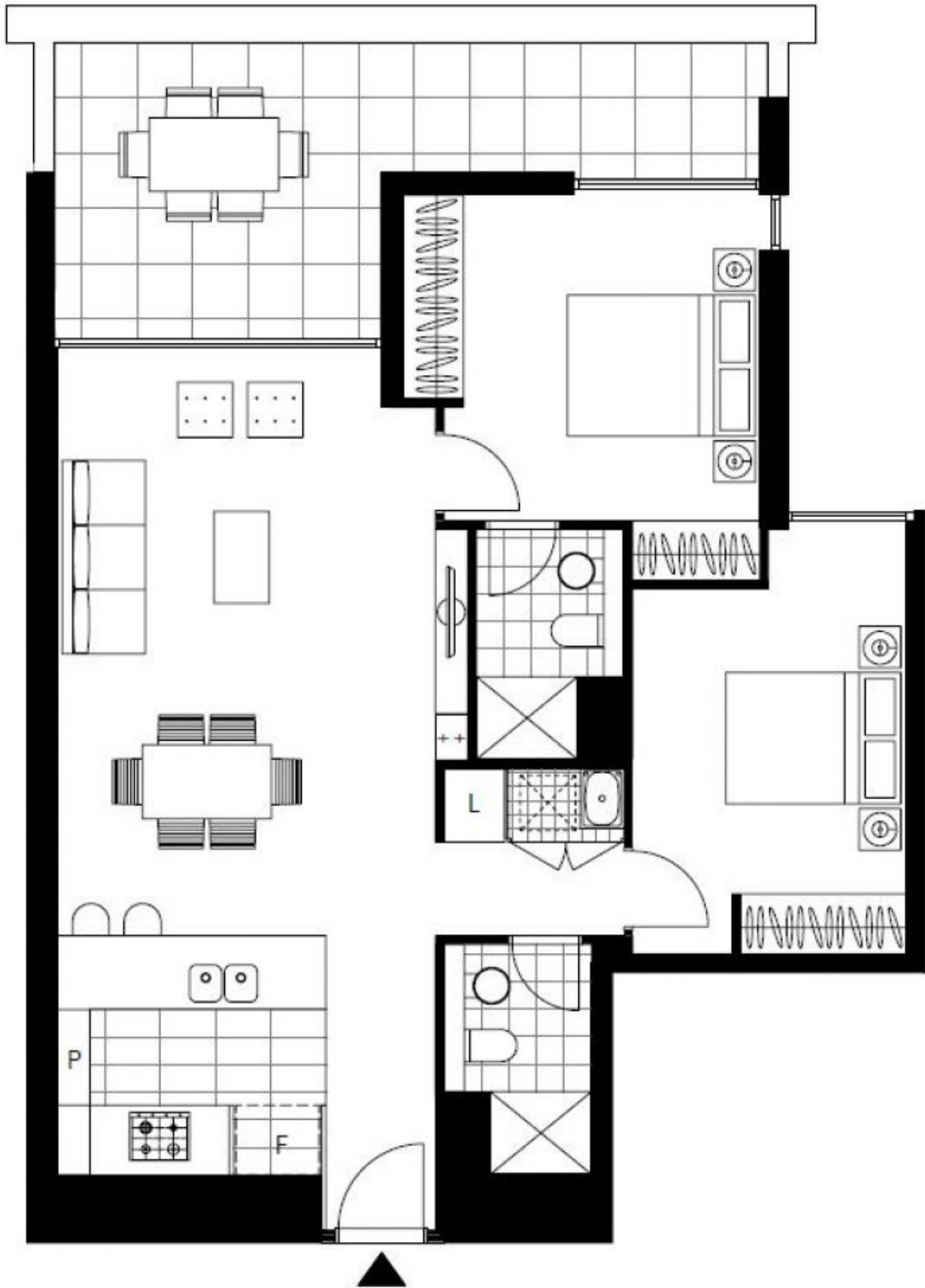
Type:

Apartment

Date Available: 19/03/2018

Bond: \$3280

<https://www.resbymirvac.com>



Plans shown are only indicative of layout. Dimensions are approximate.

ZETLAND, NSW
411/18 Ebsworth Street