

## ZETLAND, NSW

411/18 Ebsworth Street

**2** **2** **1**   
BED BATH CAR

### 2-Bedroom Apartment with city views!

This 95sqm, level 4 apartment features:

- Modern kitchen with stone benchtops and Miele appliances
- Large living space with direct access to balcony
- Double bedrooms with floor to ceiling built-ins
- Internal laundry with Fisher and Paykel dryer included
- Secure parking in basement with separate storage cage
- Ducted A/C, video intercom and NBN connectivity
- Walking distances to Woolworths, The Social Corner and Green Square train station

**820**

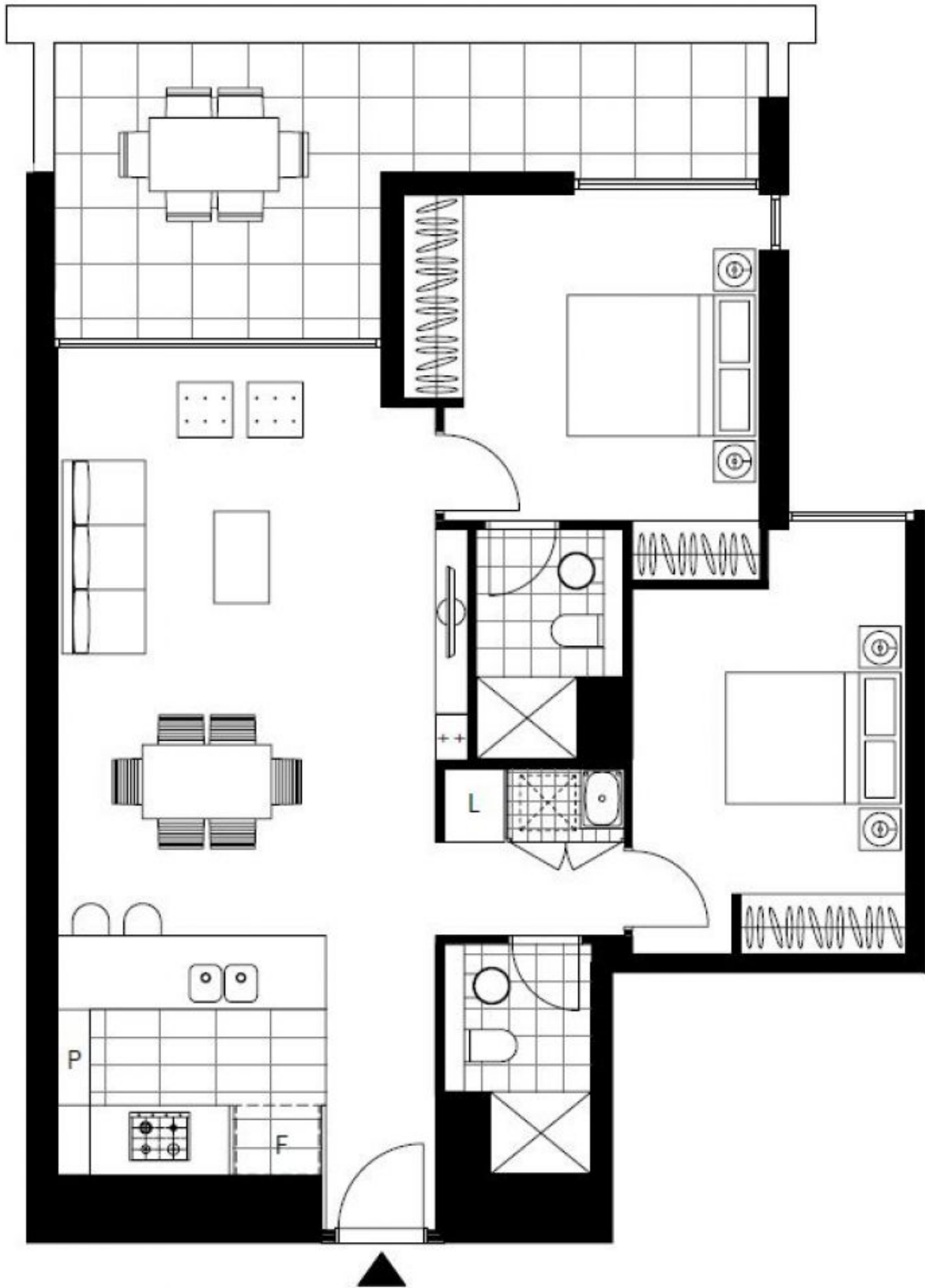
**Contact:** Matthew Matthews  
02 8588 8888  
0418 266 590

**Type:** Apartment  
**Date Available:** 19/03/2018

**Bond:** \$3280

<https://www.resbymirvac.com>

Contact our team from Real Estate Services by Mirvac on 02 8588 8888 for more information



Plans shown are only indicative of layout. Dimensions are approximate.

**ZETLAND, NSW**  
411/18 Ebsworth Street