



GLEBE, NSW
409/2 Scotsman Street

1
BATH



Deposit Taken

This 50sqm, 4th floor Apartment features:
Oversized Studio Apartment in Harold Park

- Spacious bedroom area separated by a modern sliding partition
- Open-plan living and dining area, leading to the balcony
- Modern kitchen with stone benchtop and Miele appliances
- Sleek bathroom with plenty of storage
- Generous balcony, perfect for entertaining
- Internal laundry with washer and dryer included
- Ducted A/C, video intercom and NBN connectivity
- 400m to the Heritage-listed Tramsheds, light rail station and public transport

Deposit Taken

Contact: Matthew Matthews
02 8588 8888
0418 266 590
Stuart Nohra
02 8588 8888
0432 206 000

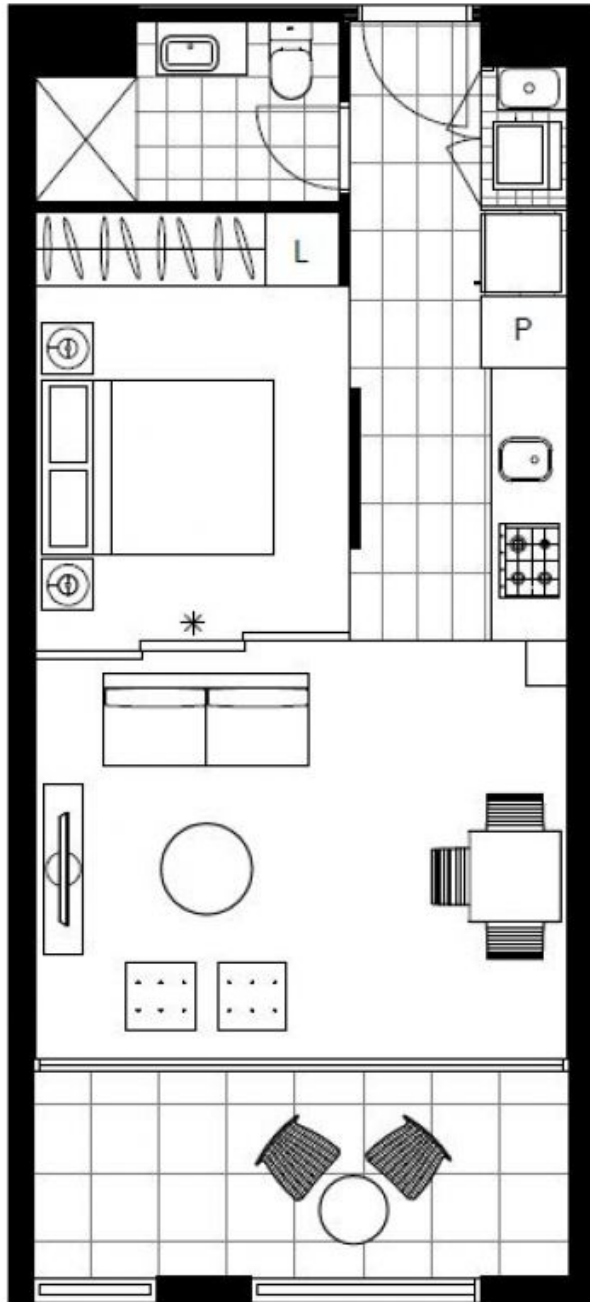
Type: Studio

Date Available: 20/12/2019

Bond: \$2000

<https://www.resbymirvac.com>

For more information, please contact Real Estate Services by Mirvac on 02 8588 8888 or email enquiries@resbymirvac.com - Your Onsite Agent!



Plans shown are only indicative of layout. Dimensions are approximate.

GLEBE, NSW
409/2 Scotsman Street