

ZETLAND, NSW

211/28 Ebsworth Street

2 **2** **1** 
BED BATH CAR

2-Bedroom Apartment in Green Square with Entertainers' courtyard

This 118sqm, 2-Bedroom Apartment offers;

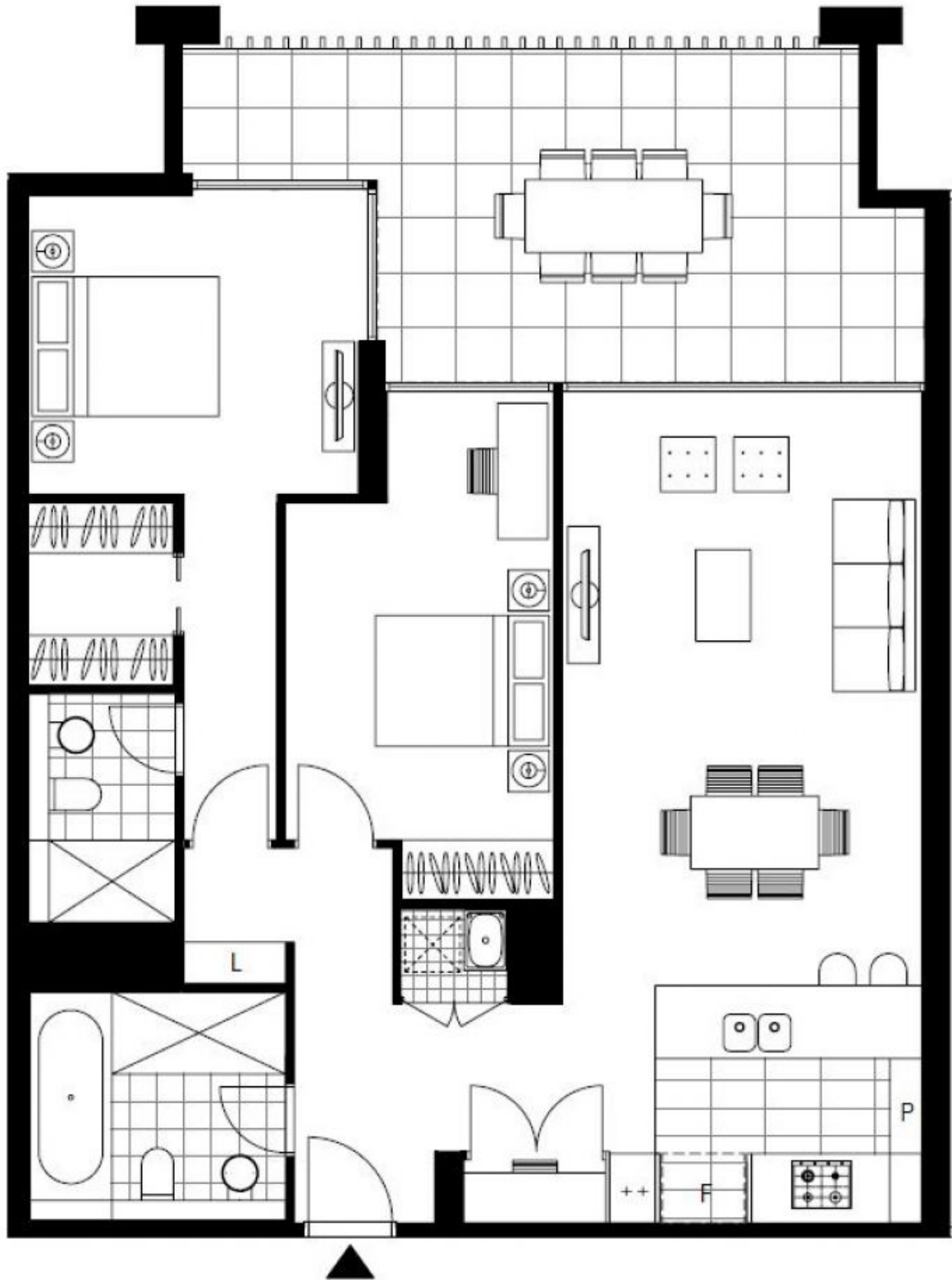
- Modern kitchen with stone benchtops and Smeg appliances
- Open plan living with hidden study nook
- Spacious double bedrooms with built-in wardrobes
- Sleek bathroom with bathtub in main
- Internal laundry with dryer included
- Secure basement car space AND storage cage included
- Walking distance to Woolworths, The Social Corner and Green Square train station

DEPOSIT TAKEN

Contact: Georgia Glynn
02 8588 8888
0481 388 777
Carmen Whiteley
02 8588 8888
0497 555 519

Type: Apartment
Date Available: 20/03/2018
Bond: \$3480
<https://www.resbymirvac.com>

For more information, please contact Real Estate Services by Mirvac on 02 8588 8888 today.



Plans shown are only indicative of layout. Dimensions are approximate.

ZETLAND, NSW
211/28 Ebsworth Street