



## GLEBE, NSW

307/95 Ross Street

**1**  
BED

**1**  
BATH



### DEPOSIT TAKEN

Magnificent 1-Bedroom Apartment in Harold Park  
This apartment on level 3 has to offer:

- Open-plan living and dining area
- Tiled throughout
- Large bedroom with built-in wardrobe
- Modern kitchen with stone bench tops and Miele appliances
- Spacious large balcony
- Internal washing machine & dryer included
- Basement storage cage
- Sorry, pets not permitted
- Walking distance to buses, the light rail and the Tramsheds

### DEPOSIT TAKEN

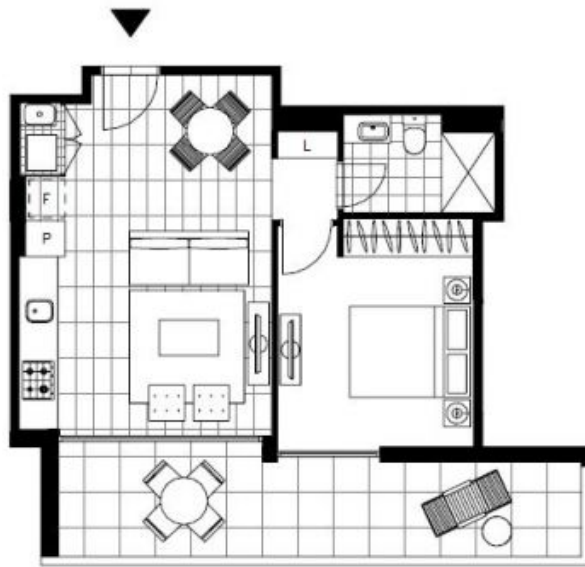
**Contact:** Naz Sabzpour  
02 8588 8888  
0401 545 440

**Type:** Apartment

**Date Available:** 16/03/2018

**Bond:** \$2260

<https://www.resbymirvac.com>



LEVEL 3

Plans shown are only indicative of layout. Dimensions are approximate.

**GLEBE, NSW**  
307/95 Ross Street