

GLEBE, NSW

1216/1 Scotsman Street

1
BED

1
BATH



DEPOSIT TAKEN

Modern 1-Bedroom Apartment in Harold Park
This 54sqm, 2nd floor 1-Bedroom Apartment features:

- Large bedrooms with floor to ceiling built-in wardrobes
- Open-plan living and dining area flowing onto balcony
- Modern kitchen with stone benchtops and Miele appliances
- Sleek bathrooms with plenty of storage
- West-facing balcony
- Internal laundry with washing machine and dryer included
- Ducted Air conditioning, video intercom and NBN connectivity
- 400m to the Tramsheds, light rail station and public transport

images indicative only

DEPOSIT TAKEN

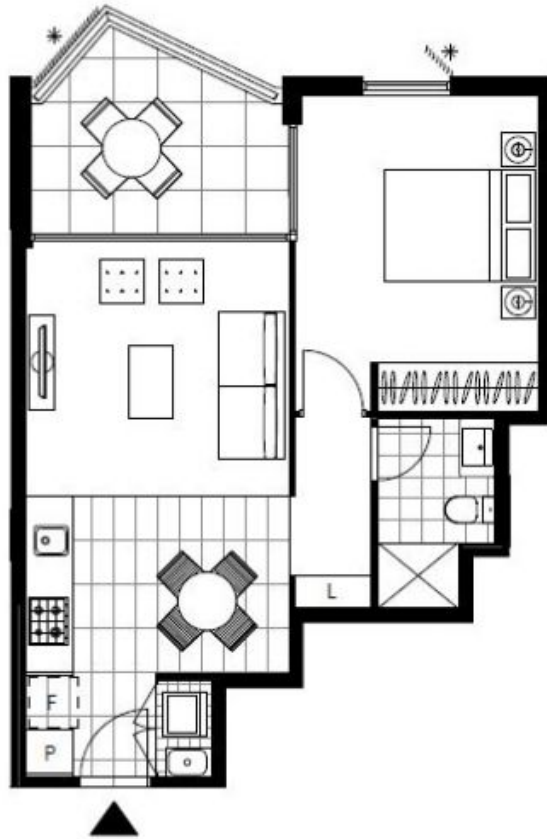
Contact: Naz Sabzpour
02 8588 8888
0401 545 440

Type: Apartment

Date Available: 14/03/2019

Bond: \$2300

<https://www.resbymirvac.com>



LEVEL 2

Plans shown are only indicative of layout. Dimensions are approximate.

GLEBE, NSW
1216/1 Scotsman Street