



## GLEBE, NSW

603/147 Ross Street

**2** BED **2** BATH **1** CAR 

### DEPOSIT TAKEN!

This 115 sqm, 6th floor Apartment features:

Highly Sought after 2-bedroom apartment in Harold Park

- Spacious bedrooms with generous built-in wardrobes
- Open-plan living and dining area, leading to the balcony
- Contemporary kitchen with stone benchtops and Miele appliances
- Sleek bathrooms with generous storage, bath in ensuite
- North-East facing balcony overlooking the park
- Additional balcony off main bedroom
- Internal laundry with washer and dryer included
- Secure car space and storage cage included
- Ducted A/C, video intercom and NBN connectivity
- 300m to Tramsheds, light rail station and public transport

### DEPOSIT TAKEN

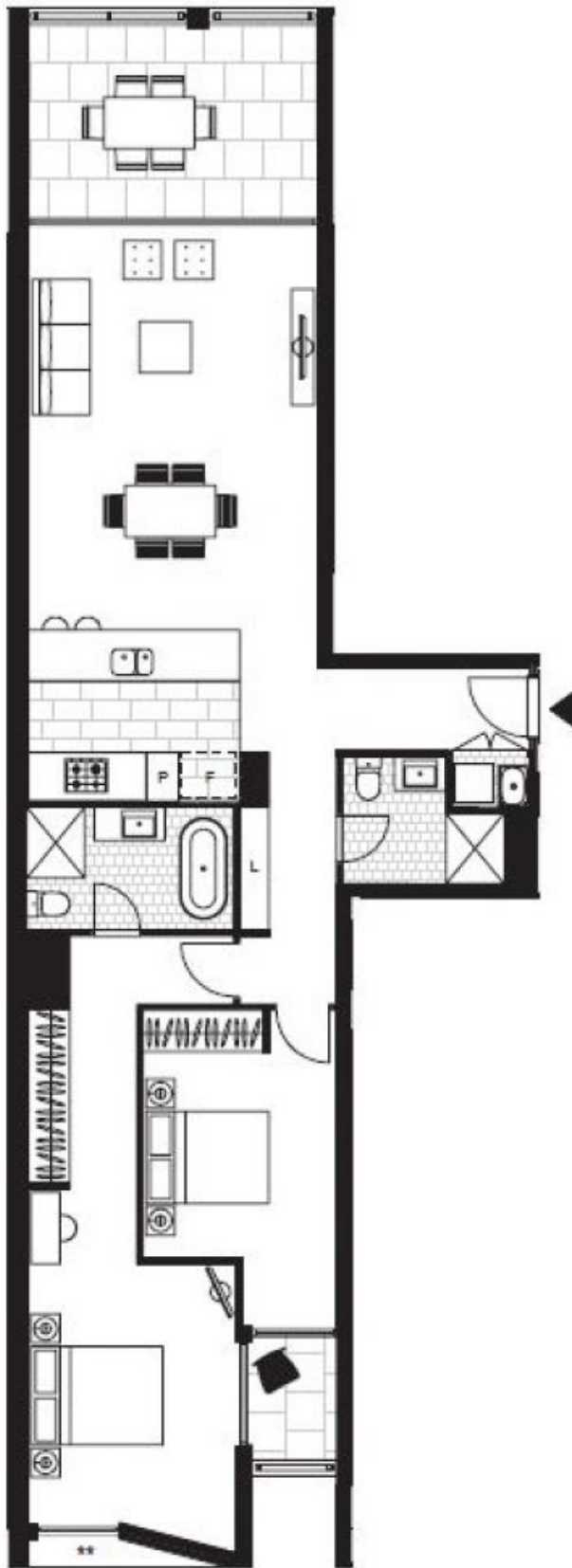
**Contact:** Matthew Matthews  
02 8588 8888  
0418 266 590  
Naz Sabzpouri  
02 8588 8888  
0401 545 440

**Type:** Apartment

**Date Available:** 20/06/2019

**Bond:** \$3600

<https://www.resbymirvac.com>



Plans shown are only indicative of layout. Dimensions are approximate.

**GLEBE, NSW**  
603/147 Ross Street