



## GLEBE, NSW

309/105 Ross Street

**1**  
BED

**1**  
BATH



### Deposit Taken!

This 72sqm, 1-Bedroom Apartment features:  
 Spacious 1-Bedroom Apartment in Harold Park  
 - Large bedroom with floor to ceiling built-in wardrobes  
 - Open-plan living and dining area flowing onto balcony  
 - Modern kitchen with stone bench top and Miele appliances  
 - Sleek bathroom with plenty of vanity storage  
 - South-facing balcony looking out to Ross Street  
 - Internal laundry with washing machine and dryer  
 - Secure storage cage included  
 - Ducted Air conditioning, video intercom and NBN connectivity  
 - 500m to the Tramsheds, light rail station and public transport  
 - Property is unfurnished

### Deposit Taken

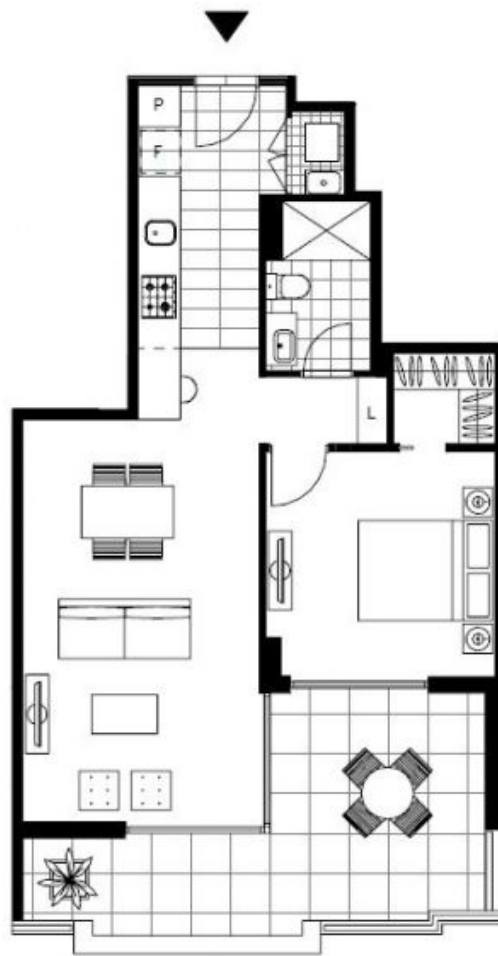
**Contact:** Matthew Matthews  
 02 8588 8888  
 0418 266 590  
 Naz Sabzpouri  
 02 8588 8888  
 0401 545 440

**Type:** Apartment

**Date Available:** 13/05/2019

**Bond:** \$2320

<https://www.resbymirvac.com>



LEVEL 3

Plans shown are only indicative of layout. Dimensions are approximate.

**GLEBE, NSW**  
309/105 Ross Street