



ZETLAND, NSW
310/18 Ebsworth Street

3 BED **2** BATH **1** CAR 

Large 3-Bedroom Apartment with Parking in Zetland

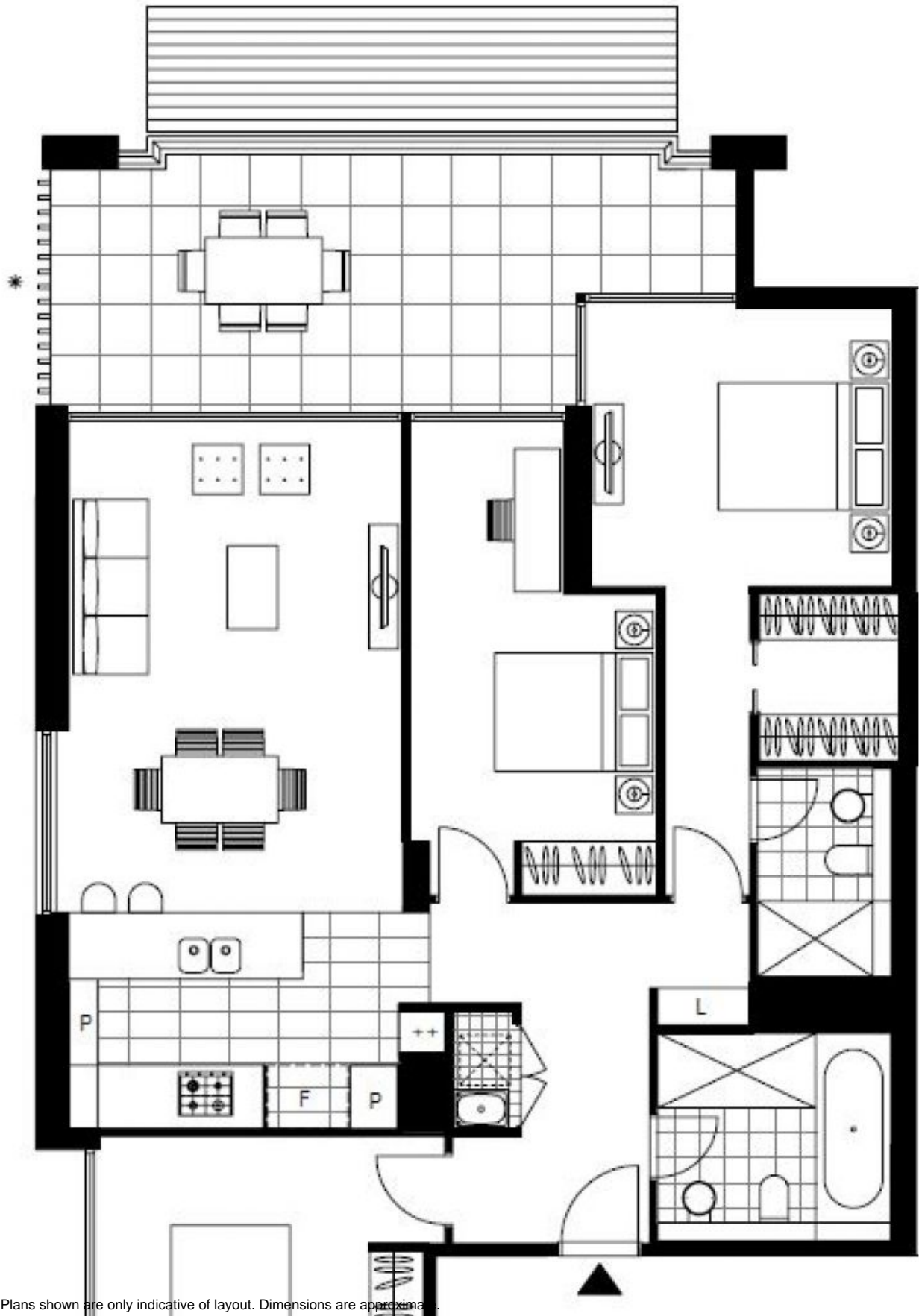
This level 3, East-facing 3-Bedroom Apartment features;

- Large bedrooms with floor to ceiling built-in wardrobes, Master with walk-in robe
- Open plan living and dining area flowing onto balcony
- Modern kitchen with stone benchtops and Miele Appliances
- Integrated Fisher and Paykel fridge provided
- Entertainers' balcony with multiple access points
- Sleek bathrooms with plenty of storage, bath in master
- Internal laundry with dryer included
- Secure car space and storage cage included
- Ducted A/C, NBN Connectivity and video intercom
- 300m walk to Woolworths, The Social Corner, Green Square Train Station and Green Square Public Library

1100

Contact: Georgia Glynn
02 8588 8888
0481 388 777
Carmen Whiteley
02 8588 8888
0497 555 519

Type: Apartment
Date Available: 01/03/2019
Bond: \$4400
<https://www.resbymirvac.com>



Plans shown are only indicative of layout. Dimensions are approximate.

ZETLAND, NSW
310/18 Ebsworth Street