



## ZETLAND, NSW

310/18 Ebsworth Street

**3**  
BED

**2**  
BATH

**1**  
CAR



### Large 3-Bedroom Apartment with Parking in Zetland

This level 3, East-facing 3-Bedroom Apartment features;

- Large bedrooms with floor to ceiling built-in wardrobes, Master with walk-in robe
- Open plan living and dining area flowing onto balcony
- Modern kitchen with stone benchtops and Miele Appliances
- Integrated Fisher and Paykel fridge provided
- Entertainers' balcony with multiple access points
- Sleek bathrooms with plenty of storage, bath in master
- Internal laundry with dryer included
- Secure car space and storage cage included
- Ducted A/C, NBN Connectivity and video intercom
- 300m walk to Woolworths, The Social Corner, Green Square Train Station and Green Square Public Library

**1100**

**Contact:**

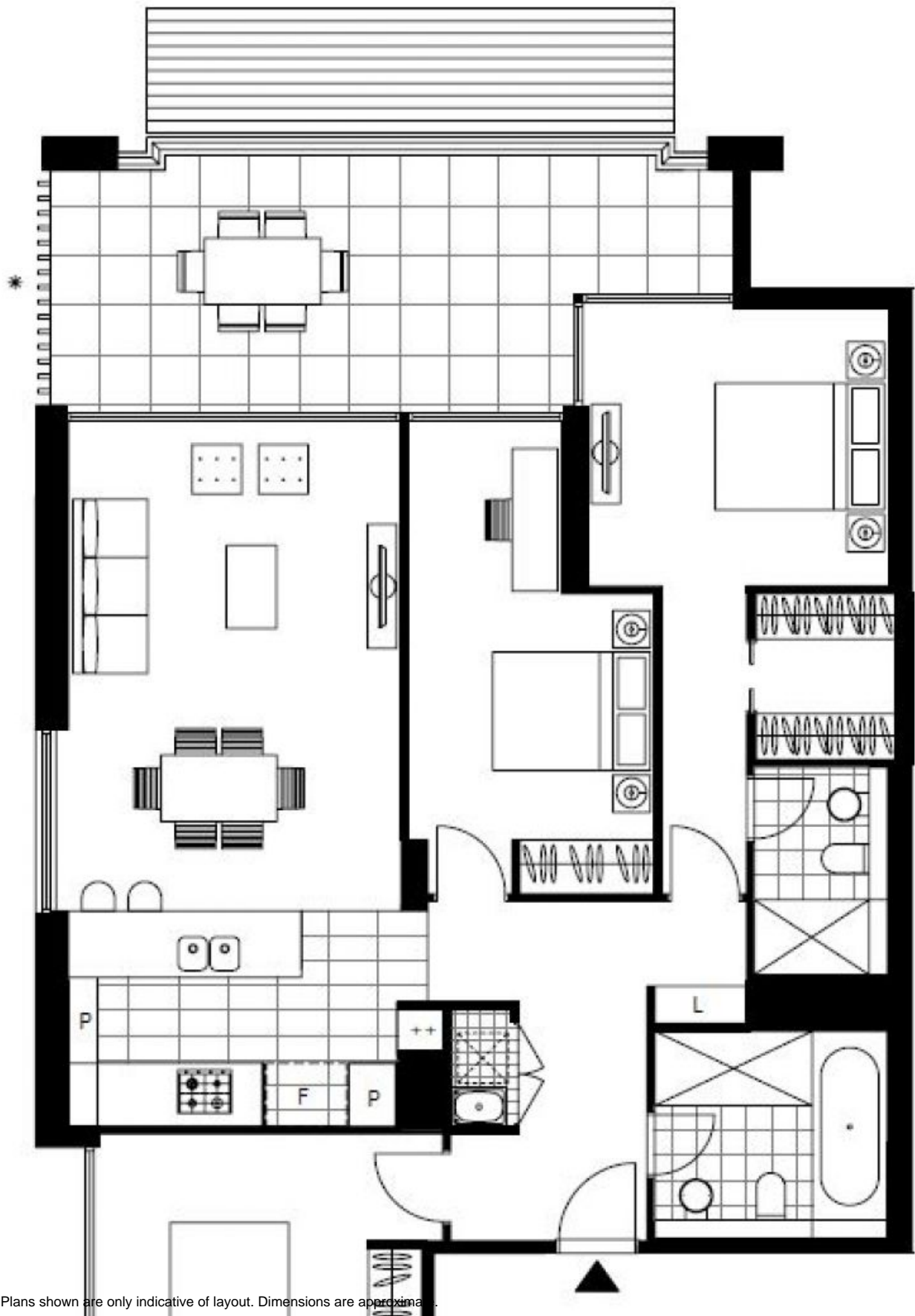
Georgia Glynn  
02 8588 8888  
0481 388 777  
Carmen Whiteley  
02 8588 8888  
0497 555 519

**Type:** Apartment

**Date Available:** 01/03/2019

**Bond:** \$4400

**<https://www.resbymirvac.com>**



Plans shown are only indicative of layout. Dimensions are approximate.

**ZETLAND, NSW**  
310/18 Ebsworth Street

LEVEL 3