



DOCKLANDS, VIC
9 Point Park Crescent

3 BED **2** BATH **2** CAR 

Waterside Brilliance With Space and Wonderful Views

Enjoying a magnificent location next to Point Park and a wonderful example of spacious dual level living which also features impeccable style and gorgeous views, this coveted 3 bedroom + study, 2 bathroom abode is as captivating a Docklands property as you're likely to find.

Kick off 2018 by making the wonderful Docklands switch and taking advantage of this stunning waterside location in the exclusive Yarra's Edge precinct. Your entry leads directly into a courtyard which has amazing potential for summer entertaining. Inside, an open plan central living and dining zone has direct sight to the kitchen which is complete with stone benchtops, an island bench, and stainless steel Miele appliances.

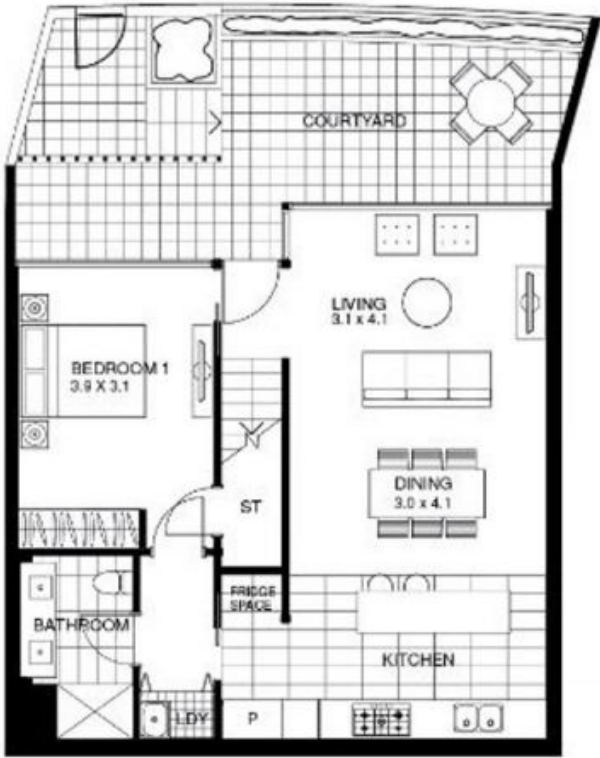
Contact Agent

Contact: Baden Lucas
03 9645 1199
0418 888 751

Type: Townhouse

Sold Date: 14/02/2018

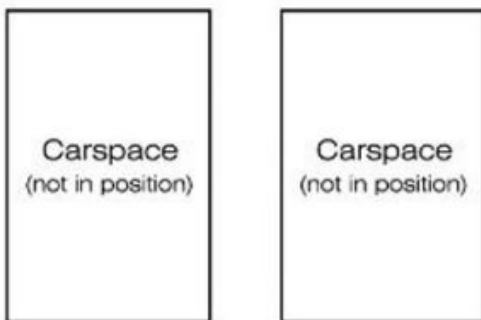
<https://www.resbymirvac.com>



LEVEL 1



LEVEL 2



Plans shown are only indicative of layout. Dimensions are approximate.

DOCKLANDS, VIC
9 Point Park Crescent