

## ZETLAND, NSW

701/18 Ebsworth Street

**2** BED **2** BATH **1** CAR 

### City Views from 2-Bedroom Apartment in Green Square

This 87sqm, 7th Floor Apartment offers:

- Modern kitchen with stone benchtops and Smeg appliances
- Open plan living and dining area with built-in TV cabinetry
- Large bedrooms with floor to ceiling built-in wardrobes
- Sleek bathrooms with plenty of storage, ensuite off master bedroom
- North-East facing balcony with city views, great for entertaining
- Internal laundry with dryer included
- Secure basement car space and storage cage included
- Ducted Air conditioning, video intercom and NBN connectivity
- Less than 300m to Woolworths, The Social Corner and Green Square Train Station

### Contact Agent

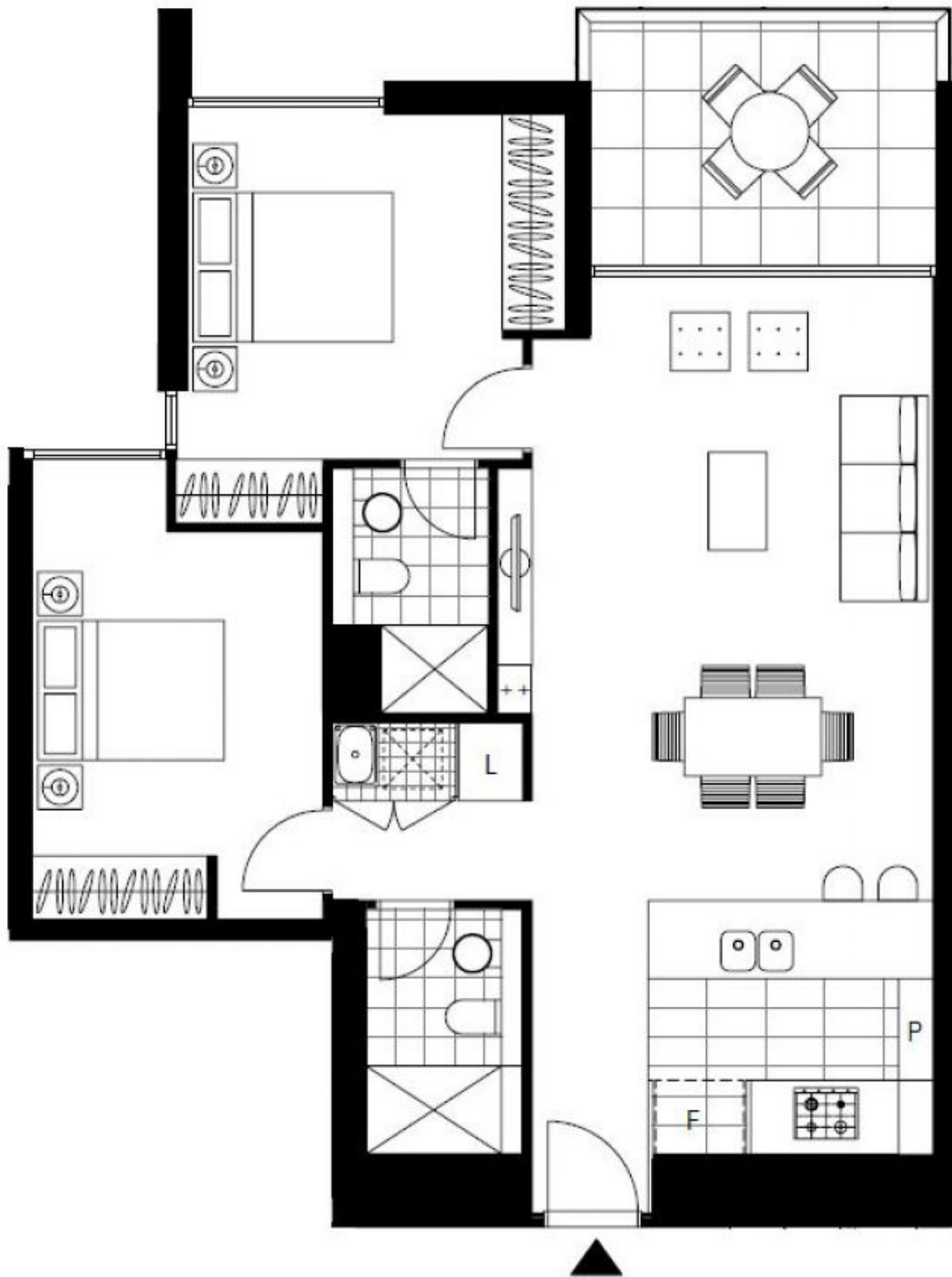
**Contact:** Carmen Whiteley  
02 8588 8888  
0497 555 519

**Type:** Apartment

**Date Available:** 04/06/2020

**Bond:** \$2800

<https://www.resbymirvac.com>



Plans shown are only indicative of layout. Dimensions are approximate.

**ZETLAND, NSW**  
701/18 Ebsworth Street