



ZETLAND, NSW
1009/28 Ebsworth Street

2 **2** **1** 
BED BATH CAR

Oversized 2-Bedroom Apartment with Parking in Zetland

This 112sqm, top-floor apartment features:

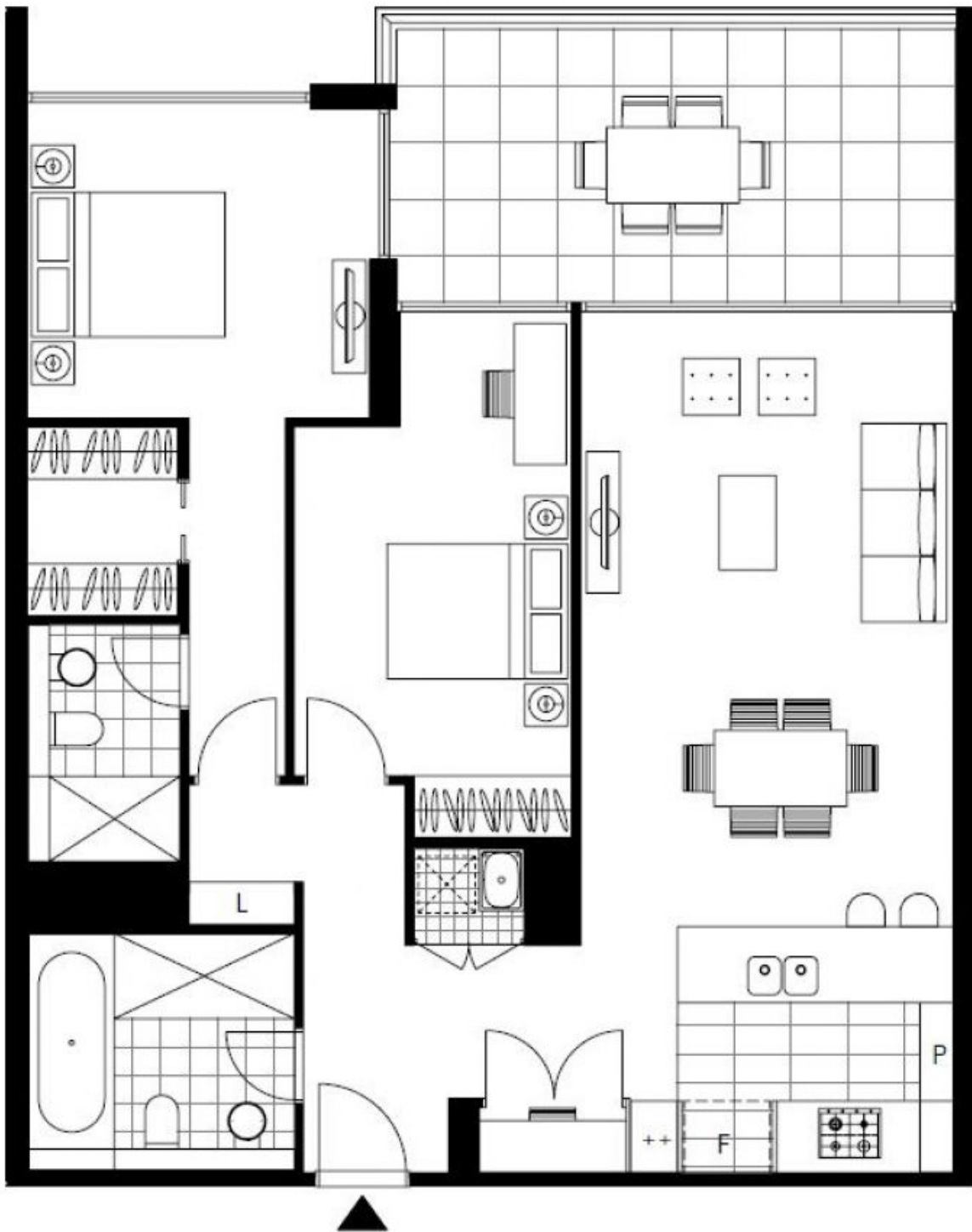
- Oversized bedrooms with generous built-in wardrobes
- Functional living and dining area, with access to balcony
- Quality kitchen with stone benchtops and built-in European appliances
- Modern bathrooms with plenty of vanity storage, bath in main
- North-East facing balcony, with city views
- Internal laundry with dryer included
- Study nook at entry, perfect for a home office
- Secure car space and storage cage included
- Ducted A/C, video intercom and NBN connectivity
- 300m to Woolworths, Green Square Train Station (10mins to the City) and Green Square Library

DEPOSIT TAKEN

Contact: Carmen Whiteley
02 8588 8888
0497 555 519

Type: Apartment
Date Available: 20/02/2021

Bond: \$2960
<https://www.resbymirvac.com>



Plans shown are only indicative of layout. Dimensions are approximate.

ZETLAND, NSW
1009/28 Ebsworth Street