

GLEBE, NSW

1408/1 Scotsman Street

2 **2** **1** 
BED BATH CAR

2-Bedroom Apartment with garden view in Harold Park

This 91sqm, 4th floor Apartment has to offer:

Garden Views in Harold Park

- Large bedrooms with floor to ceiling built-in wardrobe
- Balcony with view over internal gardens
- Stone benchtops and Miele appliances in kitchen
- Modern bathrooms with vanity storage
- Open plan living and dining area
- Internal laundry with washer and dryer included
- Secure basement storage cage and car space included
- Ducted A/C, video intercom and NBN connectivity
- 500m walk to buses, the light rail and the Tramsheds

\$730 per week | Call to inspect now! 02 8588 8888

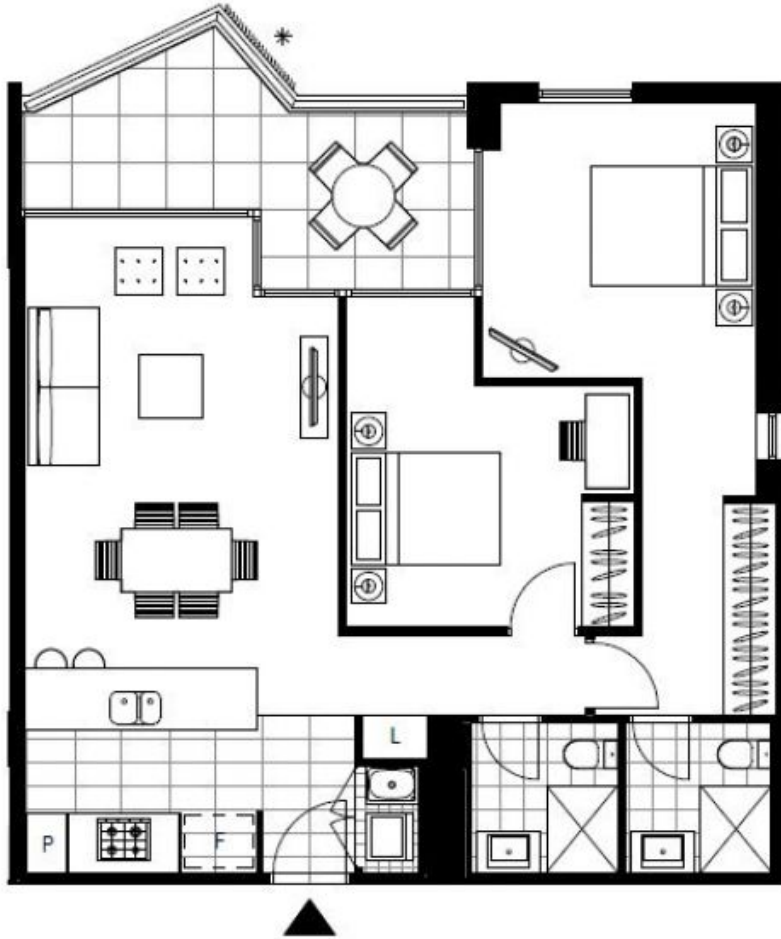
Contact: Naz Sabzpouri
02 8588 8888
0401 545 440

Type: Apartment

Date Available: 04/02/2021

Bond: \$2920

<https://www.resbymirvac.com>



LEVEL 4, 5

Plans shown are only indicative of layout. Dimensions are approximate.

GLEBE, NSW
1408/1 Scotsman Street