

## ZETLAND, NSW

809/18 Ebsworth Street

**1**  
BED

**1**  
BATH



### DEPOSIT TAKEN! OPEN INSPECTION CANCELLED

Large 1-Bedroom + Study in Ebsworth, Green Square  
This bright 68sqm 1-Bedroom + Study apartment has to offer;

- Modern kitchen with stone benchtop and Miele appliances
- Well-appointed bedroom with floor to ceiling built in wardrobes
- Separate enclosed study area with cupboard space
- Sleek bathroom with modern features
- Large entertainer's balcony with access from living area
- Internal laundry with dryer included
- Walking distance to Woolworths, The Social Corner and Green Square Train Station

For more information, please contact Real Estate Services by Mirvac on 02 8588 8888

### DEPOSIT PAID

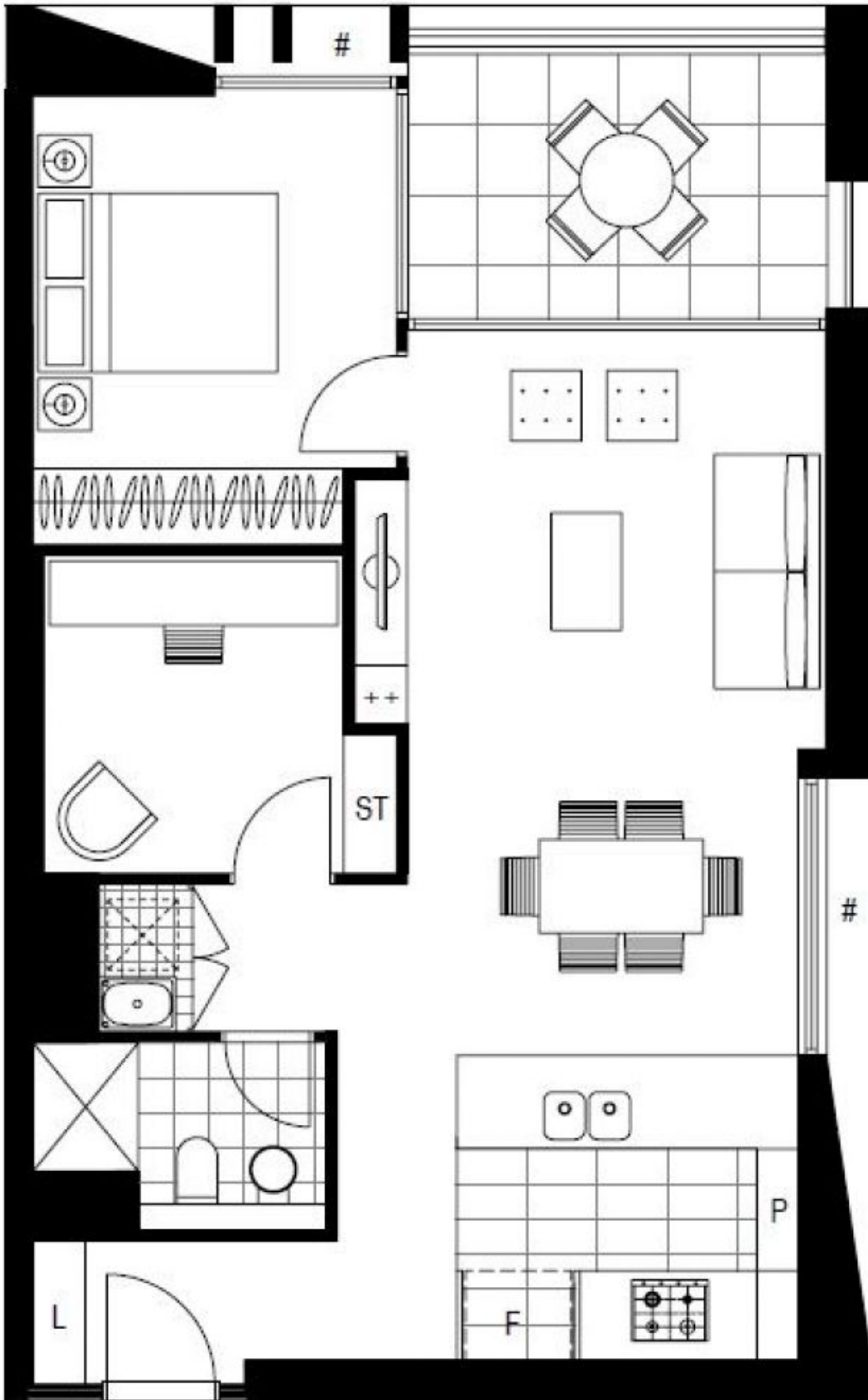
**Contact:** Georgia Glynn  
02 8588 8888  
0481 388 777  
Carmen Whiteley  
02 8588 8888  
0497 555 519

**Type:** Apartment

**Date Available:** 02/12/2017

**Bond:** \$2480

**<https://www.resbymirvac.com>**



Plans shown are only indicative of layout. Dimensions are approximate.

**ZETLAND, NSW**  
809/18 Ebsworth Street