

ZETLAND, NSW

809/18 Ebsworth Street

1
BED

1
BATH



DEPOSIT TAKEN! OPEN INSPECTION CANCELLED

Large 1-Bedroom + Study in Ebsworth, Green Square
This bright 68sqm 1-Bedroom + Study apartment has to offer;

- Modern kitchen with stone benchtop and Miele appliances
- Well-appointed bedroom with floor to ceiling built in wardrobes
- Separate enclosed study area with cupboard space
- Sleek bathroom with modern features
- Large entertainer's balcony with access from living area
- Internal laundry with dryer included
- Walking distance to Woolworths, The Social Corner and Green Square Train Station

For more information, please contact Real Estate Services by Mirvac on 02 8588 8888

DEPOSIT PAID

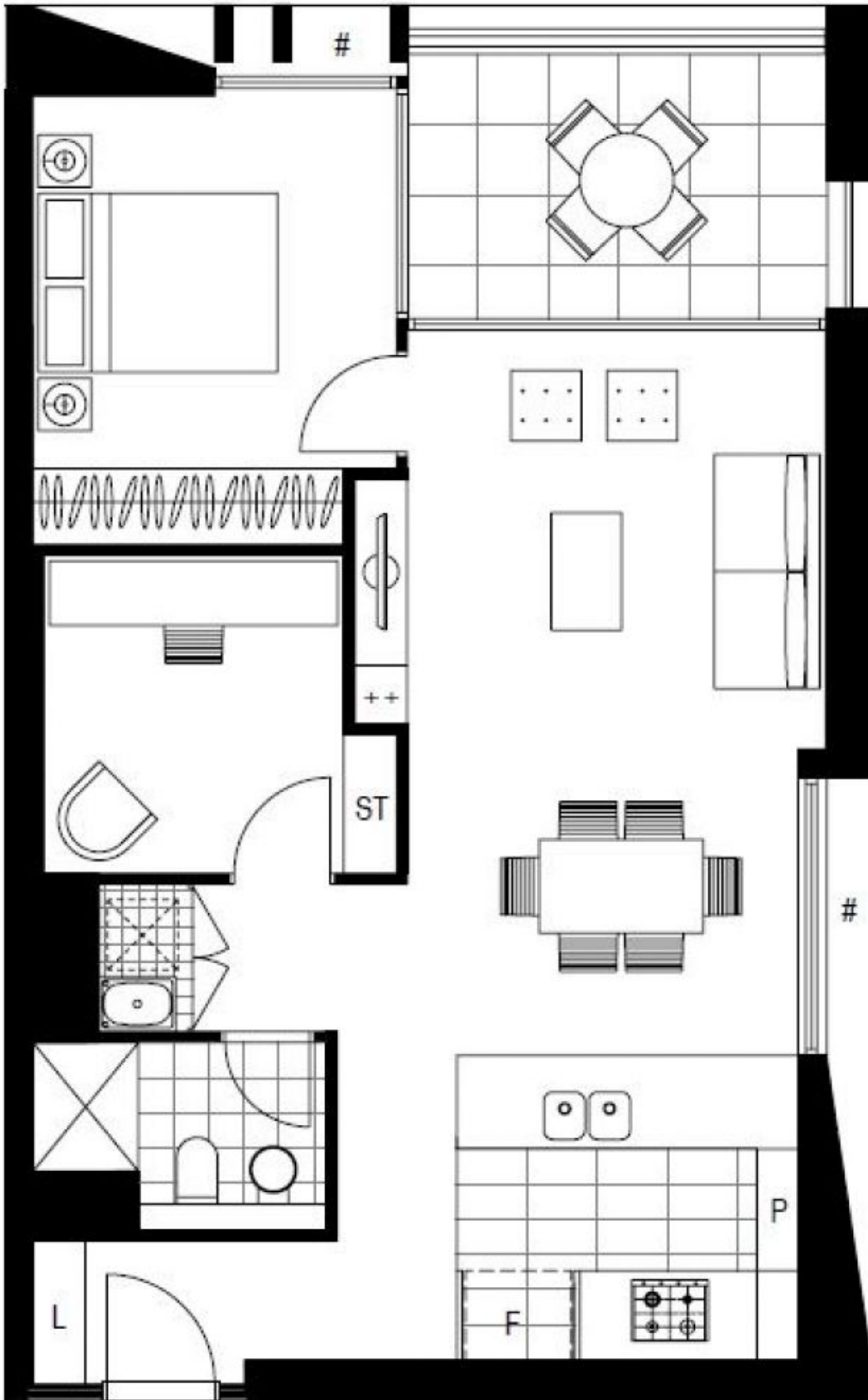
Contact: Georgia Glynn
02 8588 8888
0481 388 777
Carmen Whiteley
02 8588 8888
0497 555 519

Type: Apartment

Date Available: 02/12/2017

Bond: \$2480

<https://www.resbymirvac.com>



Plans shown are only indicative of layout. Dimensions are approximate.

ZETLAND, NSW
809/18 Ebsworth Street